



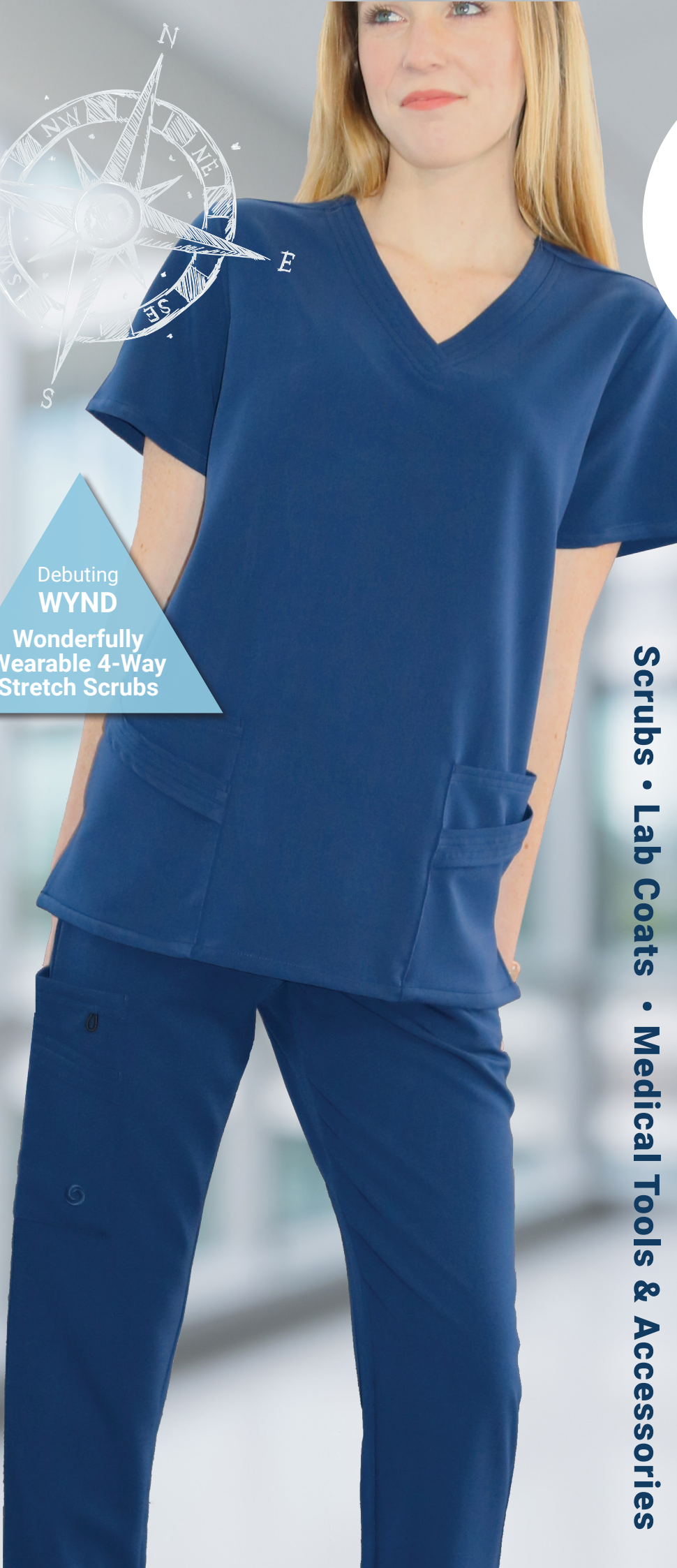
SPECTRUM

Volume
20

Scrubs • Lab Coats • Medical Tools & Accessories

Debuting
WYND

Wonderfully
Wearable 4-Way
Stretch Scrubs





SPECTRUM



Seeing 2020



Focusing on the future

Here at Spectrum, we are excited to announce several new features for the year ahead—ones we hope will continue to enhance your customer experience.

NEW WEBSITE AND ONLINE ORDERING PORTAL

Highlighting the Spectrum brands and services, our new site allows registered Distributors and Retailers the ease of placing orders directly online—and with the added ability to see current on-hand inventory for products.

WYND – OUR NEW LINE OF 4-WAY STRETCH SCRUBS

We named our new line of wonderfully wearable and flexible scrubs WYND. The whimsical variation of the word “wind” pays homage to the versatility and resilience of one of earth’s most powerful elements. WYND by Spectrum is available in styles for both ladies and men, and are created from a perfect blend of 78% Polyester, 16% Rayon and a generous 6% Spandex.

UPDATED PACKAGING FOR SPECTRUM PRO

Several of our packaged products received new packaging upgrades this past year and have a sleek new look to compliment the product for both the end-user and for point of purchase display. As new inventory arrives, these products will also receive similar enhancements.

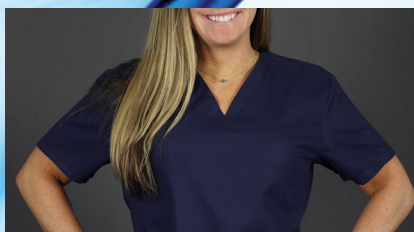
We know and believe that the key to being recognized throughout the industry as a trusted leader in healthcare apparel and accessories is to continue to provide the best quality product at the most competitive prices. If there is something we can do to further enhance your experience, please let us know!

Warmest regards,

The Spectrum Family



SPECTRUM



Spectrum Scrubs

Discover our selection of Scrub Tops, Scrub Pants and Scrub Jackets.

6



UltraSmart Lab Coats

Antimicrobial lab coats offered in a variety of styles and lengths.

20



SpectrumPro

Featuring quality stethoscopes, medical shears, reflex hammers and more, our line of medical devices and tools are all made to meet or exceed industry standards.

26



Organizers and Bags

From small wrist wallets to large duffle bags, Spectrum offers a variety of bags, totes and organizers to keep your essentials close at hand.

34

Our goal at Spectrum is to provide quality scrubs at an attractive price, along with outstanding personal customer service and care.



Buy
Online



Free
Shipping*



In-House
Decorating



Payment
Terms



Custom
Designs



Guaranteed
Satisfaction

**Free Shipping on all orders over \$250. Applies to ground shipping only (Excludes Alaska, Hawaii, and Puerto Rico)*



Run with the WYND!

The wind at your back is said to be a sign of good fortune.

At Spectrum, we believe with WYND scrubs on your back, you'll invite good fortune without having to spend one.

We created WYND with a generous amount of spandex—along with an antimicrobial, wrinkle-resistant finish—that creates a wonderfully wearable experience!



Our Scrubs

At Spectrum we understand everyone's needs are unique.

That's why we strive to provide options to meet those needs. Whether it's the dynamic challenge of outfitting hundreds of new students with the change of each semester—or finding the perfect hue to radiate warmth and compassion to the special patients in your specialized care—Spectrum has you covered.



Our color options are designed to meet the demands of the healthcare industry. If you require a color we don't show, reach out and let us know. Your input helps our team forecast future product. Additionally, for orders with sufficient lead time that meet the MOQ** for custom colored fabric, we can create the perfect hue for you.

CORE COLORS

Our most popular and in-demand colors and are colors we maintain a large inventory of in our warehouse.

 **Black**
PMS Match* Black 3C

 **Ceil Blue**
PMS Match* 659C

 **Wine**
PMS Match* 209C

 **Royal Blue**
PMS Match* 2728C

 **Navy Blue**
PMS Match* 282C

LIMITED COLORS

Colors slowly being phased from current product. Quantity and size options may be limited, yet ideal for the right customer.

 **Red**
PMS Match* 201C

 **Khaki**
PMS Match* 4525U

SECONDARY COLORS

Secondary Colors are offered in some, but not all, scrub styles. We maintain an on-hand inventory of these items, however, customers may experience a longer lead time or be subject to backorders when placing larger than average orders.

 **Caribbean Blue**
PMS Match* 308C

 **Purple**
PMS Match* 2745U

 **Hunter Green**
PMS Match* 568C

 **Grey**
PMS Match* 430C

 **Teal**
PMS Match* 322C

 **White**
PMS Match* White

 **Burnt Orange**
PMS Match* 1605C

*PMS/Pantone Colors listed are a close match to the scrub fabric. It is only provided to be a helpful tool, not to suggest as an exact match.

**MOQ: Minimum Order Quantity specs vary by piece and desired color. For MOQ specs, please refer to Price List or ask your sales representative.



Let's face it—work is hard enough—the *fabric you wear shouldn't be.*



OUR CURRENT LINE OF PRODUCTS

UltraSoft

Classic scrub styles made from the softest Ultra-Brushed fabric.

UltraSMART

Smart designs enhanced with an antimicrobial finish and available in a variety of styles and lengths.

SPECTRUMPRO

Tried and tested, professional quality medical tools and accessories to get the job done.

Introducing our newest line of scrubs



A 4-way stretch, antimicrobial, wrinkle-resistant scrub—made with a generous amount of spandex for a wonderfully wearable fit.

As pioneers in the industry, we know it takes years of experience to acquire the know-how to produce quality scrubs we feel proud to label with the Spectrum name.

Decades of trials, research and hard lessons learned helped develop our process. A process today that produces a sturdy fabric that retains color wash after wash, while remaining ultra-soft to the touch.

Great things happen when a person spends most of each day in scrubs.

At Spectrum, our mission is to make every scrub, lab coats and instrument that carries the Spectrum logo be of a quality and craftsmanship worthy for the task it is designed.



WYND

BY
SPECTRUM

Wonderfully Wearable



4-Way Stretch

A generous amount of spandex provides sturdy suppleness.

Think of it as workout wear for work.

(Actually, it's so comfy you may want to wear it all the time!)



825

Womens WYND Multi-Pocket Top

Fabric: 78% Poly - 16% Rayon - 6% Spandex

Available Sizes: XXS - 3X

Product Weight: 6 oz.

- 4 Front pockets
- Double top-stitch
- Flattering V-Neck
- Sleek side-slits
- 4-way stretch
- Antimicrobial finish
- Ultra-Brushed
- Wrinkle resistant



Style 825 & 835 Colors:
Black, Royal Blue, Navy Blue



835

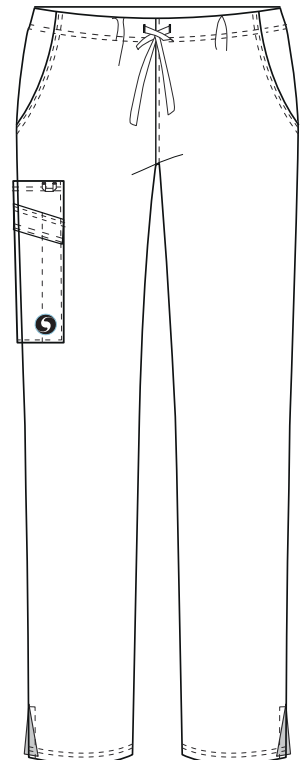
Womens WYND Cargo Pant

Fabric: 78% Poly - 16% Rayon
6% Spandex

Available Sizes: XXS - 3X

Product Weight: 6 oz.

- 2 Front pockets
- 2 Back pockets
- Double top-stitch
- Bottom pant side-slits
- 1 Right cargo leg double pocket
- Comfy drawstring & elastic waist
- 4-way stretch
- Antimicrobial finish
- Ultra-Brushed
- Wrinkle resistant





FABRIC FEATURES



4-Way Stretch

A generous amount of spandex provides sturdy suppleness.

Think of it as workout wear for work.



Antimicrobial Finish

Inhibits the growth of microbes to offer protection, durability and freshness.



Ultra-Brushed

Breezy soft fabric that retains its color wash after wash.



Wrinkle Resistant

Designed to provide freshness and hold its stylish shape all day long.

Wonderfully Wearable



WYND

BY
SPECTRUM



Silvadur's patented feature remains active on fabric, wash after wash.

820

Mens WYND Multi-Pocket Top

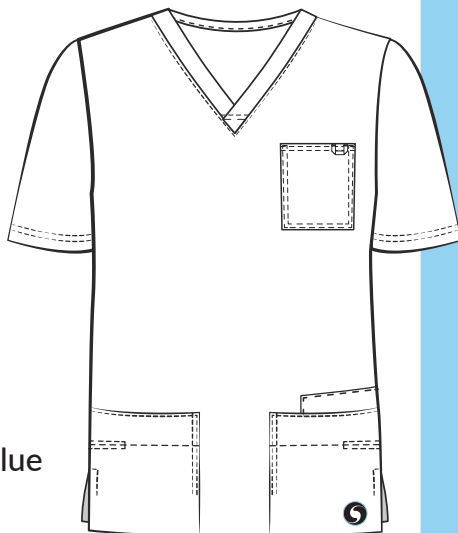
Fabric: 78% Poly - 16% Rayon - 6% Spandex

Available Sizes: XS - 3X

Product Weight: 6 oz.

- 4 Front pockets
- Double top-stitch
- Comfortable V-Neck
- Sleek side-slits
- 4-way stretch
- Antimicrobial finish
- Ultra-Brushed
- Wrinkle resistant

Style 820 & 830 Colors:
Black, Royal Blue, Navy Blue



830

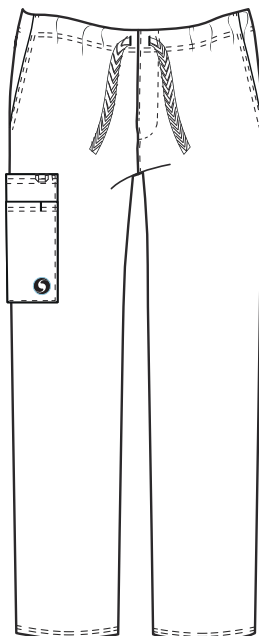
Mens WYND Cargo Pant

Fabric: 78% Poly - 16% Rayon - 6% Spandex

Available Sizes: XS - 3X

Product Weight: 6 oz.

- 2 Back pockets
- 1 Right cargo leg double pocket
- Functional front zipper
- Double top-stitch
- 4-way stretch
- Antimicrobial finish
- Ultra-Brushed
- Wrinkle resistant



Bonus Bag!

Each garment arrives in a bio-friendly
11" x 15.5" zipped bag that can be
conveniently repurposed.





220C

Unisex V-Neck Top

Fabric: Brushed 65/35 PC Poplin

Available Sizes: XXS -5X*

Product Weight: 4.5 oz.

- Unisex
- V-neck
- Left chest pocket
- Set-in sleeves

A traditional fit, with single chest pocket, and side vents.

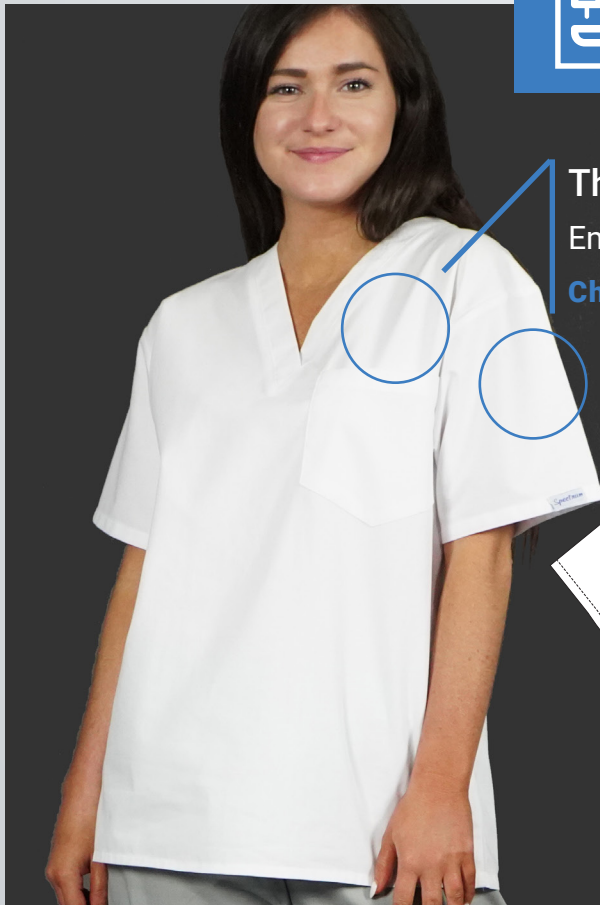
CORE COLORS: Black, Ceil Blue, Royal Blue, Wine, Navy Blue



SECONDARY COLORS: Carribean Blue, Khaki, Purple, Hunter Green, White, Grey, Teal



Available Blank or Decorated



The perfect canvas to tell your story.

Embroidery ❖ Heat Transfer ❖ Patches

Choose one or a combination of two—or all!



V-Neck

Comfy and classic

Set-in sleeves

For room to move

Left chest pocket

To carry stuff—like a penlight (*we sell them on page 31*)

Cozy and comfy tunic offers two lower pockets to allow plenty of space for storing.



221C Unisex V-Neck Tunic

Fabric: Brushed 65/35 PC Poplin

Available Sizes: XXS - 5X*

Product Weight: 4.5 oz.**

- Unisex
- Side vents
- Two lower pockets
- Set-in sleeves

CORE COLORS: Black, Ceil Blue, Royal Blue, Wine, Navy Blue



SECONDARY COLORS: Carribean Blue, Khaki, Purple, Hunter Green, White, Grey, Teal



This unisex style is available in a variety of colors, making it a popular choice for teams and schools.



Ultra-brushed

To feel soft on the skin

Vibrant color choices

Stay bright wash after wash

Ample pockets

To stash stuff—like a stethoscope (we sell them on pages 26-27)

Sensible design

For comfortable movement that won't bind

Quality without high cost.



9506 Ladies Mock Wrap Tunic

Fabric: Brushed 65/35 PC Poplin

Available Sizes: XS - 3X*

Product Weight: 4.5 oz.**

- Front yoke
- Two lower pockets
- Side vents

Flattering faux wrap provides a classic style for women.

CORE COLORS:

Black, Royal Blue, Navy Blue



UltraSoft

The perfect canvas to tell your story.

Embroidery ❖ Heat Transfer ❖ Patches



222C Three-Pocket Top

Fabric: Brushed 65/35 PC Poplin

Available Sizes: XS - 5X*

Product Weight: 4.5 oz.**

- One left chest pocket
- Two lower front pockets
- Side vents

CORE COLORS: Burnt Orange



Licensed Collegiate Scrubs

Whether it's Horns, Horn Frogs, Lions, Tigers or Bears—we work with organizations to produce properly licensed collegiate scrubs and other medical accessories before they leave our warehouse—eliminating unnecessary extra steps and costs to create a finished ready-to-wear product.





SCRUB JACKET | Complete your ensemble with a jacket made from the same ultra-brushed fabric as our UltraSoft scrubline



Inner Pocket for tablet, phone, paperwork...a snack!

CORE COLORS: Black, White, Ceil Blue, Royal Blue, Wine, Navy Blue



SECONDARY COLORS: Carribean Blue, Khaki, Hunter Green, Grey



418C UltraSoft Scrub Jacket

Fabric: Brushed 65/35 PC Poplin

Available Sizes: XXS - 5X*

Product Weight: 4.5 oz.

*Limited selection also available in sizes 6X-8X, depending on color choice.



- Coordinating front snaps
- Matching ribbed cuffs
- Two lower pockets
- Inner tablet pocket

Embroidery, heat transfer and patches all enhance the look and help make it your own.



218C UltraSoft Snap-Front Tunic

Fabric: Brushed 65/35 PC Poplin

Available Sizes: XXS - 5X*

Product Weight: 4.5 oz.**

- Coordinating front snaps
- V-Neck cut
- Two lower pockets
- Unisex sizing



CORE COLORS: Black, Ceil Blue,
Royal Blue, Wine, Navy Blue



SECONDARY COLORS: Carribean Blue,
Khaki, Purple, Hunter Green, White, Teal



UltraSoft Scrub Pants

When you want simplistic and classic fit, then look no further. Sturdy elastic waist, drawstring or a combination provides an easy fit with comfort and mobility. Ultra-brushed fabric feels nice to the touch, yet is durable to withstand repeated washing and maintain color.



300C

UltraSoft Classic Elastic Pant

Fabric: Brushed 65/35 PC Poplin

Available Sizes: XXS - 5X*

Product Weight: 4.5 oz.

- Elastic waist
- Two side pockets, one back pocket
- Unisex sizing

CORE COLORS: Black, Ceil Blue, Royal Blue, Wine, Navy Blue



SECONDARY COLORS: Carribean Blue, Khaki, Purple, Hunter Green, White, Grey, Teal



306C

UltraSoft Drawstring Pant

Fabric: Brushed 65/35 PC Poplin

Available Sizes: XXS - 5X*

Product Weight: 4.5 oz.

- Drawstring waist
- Two side pockets
- One back pocket

CORE COLORS: Black, Ceil Blue, Royal Blue, Wine, Navy Blue



SECONDARY COLORS: Carribean Blue, Khaki, Purple, Hunter Green, White, Grey, Teal, Burnt Orange





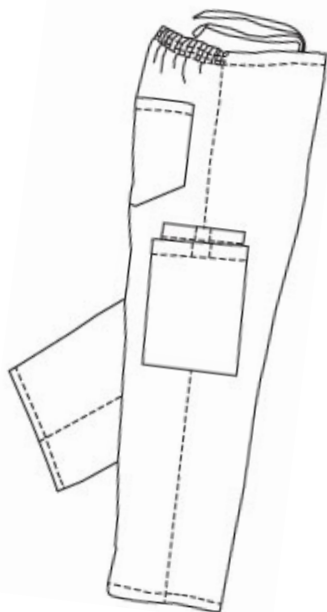
Multiple Pockets



Ultra-brushed cotton for
soft as a feather fabric



Drawstring tie front & back
elastic waist—the best of
both worlds!



P

Available
in shorter,
petite length

T

Available in
longer (tall)
length

#1

Bestseller!

313

UltraSoft Cargo Pant

Fabric: Brushed 65/35 PC Poplin

Available Sizes: XXS - 5X*

Product Weight: 4.5 oz.

- Waist half drawstring/half elastic
- Two side pockets
- Three cargo pockets
- One back pocket
- Matching Velcro closures
- Unisex sizing

CORE COLORS: Black, Ceil Blue, Royal Blue,
Wine, Navy Blue



SECONDARY COLORS: Carribean Blue, Purple,
Hunter Green, Grey, Teal, Khaki, White



UltraSoft



LAB COATS | Lab coats in a variety of lengths in both unisex, ladies, poplin and twill.

UltraSMART

A smart choice for lab coats



Embrace Fresh.

Science and innovation combine to create SILVADUR technology, the intelligent antimicrobial that keeps textiles fresh and odor-free. SILVADUR's patented feature remains active on fabric wash after wash, ensuring longer effectiveness against undesirable bacteria.

The long and short of it.

Lab Coats are worn today in many industries—from lab technicians and pharmacist, to spa personnel and veterinarians. For those in the medical profession, there are unwritten traditions regarding coat length. These traditions vary and are even considered archaic by some. Regardless, it helps to have an understanding of what these traditional lengths mean when selecting a style.

The short white coat length indicates completion of medical school.

30"



Residents and non-attending Fellows wear a mid-length white coat.

34"



Attendings & Fellows hit just above or at the knee.

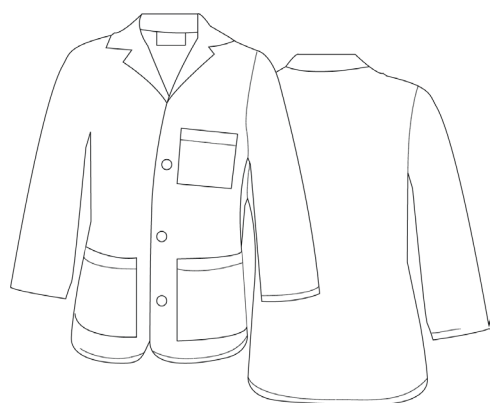
40"



Longer length for licensed physicians.

44"





406A

30" Antimicrobial Consultation Coat

Fabric: Brushed 65/35 PC Poplin with antimicrobial finish

Color: White

Available Sizes: XXS - 3X

Product Weight: 5 oz.*

- Three button front closure
- One chest pocket
- Two lower pockets
- Unisex



The Consultation Coat is styled in the traditional hip-length cut and is tailored to fit similar to a conventional jacket.

Available in classic white only, this coat is a perfect choice for the symbolic White Coat Ceremony for medical school grads.



Professional and classic, the 34" Unisex Lab Coat provides the perfect coverage for both men and women.

401A 34" Unisex Antimicrobial Lab Coat

Fabric: Brushed 65/35 PC Poplin
with antimicrobial finish

Color: White

Available Sizes: XXS - 8X*

Product Weight: 5 oz.*

- Four button front closure
- One chest pocket
- Three lower pockets
- Two button, swing back belt
- Side access vents



Side vents on both sides make for easy access to inner pant pockets—a high-demand, hard to find feature. Four front pockets provide ample space for pens, tools and phones.

410A

34" Ladies

Antimicrobial Lab Coat

Fabric: Brushed 65/35 PC Poplin with antimicrobial finish

Color: White

Available Sizes: XS - 3X

Product Weight: 5 oz.*

- Four button front closure
- One chest pocket
- Three lower pockets
- Two button, swing back belt
- Shoulder darts

Flattering shoulder darts create a feminine fit for our ladies version of the 34" Lab Coat.



Lower left pocket has an added inner "bonus pocket" that nicely fits pens and most popular cell phones.



The 40" lab coat should fall just above or at the knee. Traditionally worn by Attendees and Fellows in the Medical Field, this length is also a good choice for those needing to offer greater protection from spillage on under clothes and skin.

Available in both Unisex and Ladies style cut for a choice in comfort and preference.

400A **40" Unisex** **Antimicrobial Lab Coat**

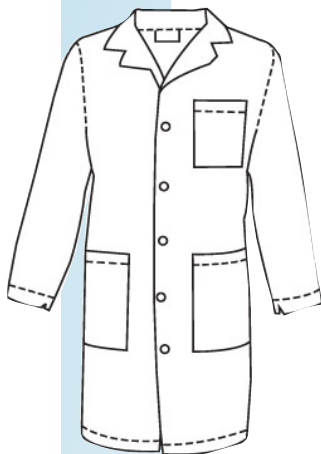
Fabric: Brushed 65/35 PC Poplin with antimicrobial finish

Color: White

Available Sizes: XXS - 8X*

Product Weight: 5 oz.*

- Five button front closure
- One chest pocket
- Three lower pockets
- Two button, swing back belt



411A **40" Ladies** **Antimicrobial Lab Coat**

Fabric: Brushed 65/35 PC Poplin with antimicrobial finish

Color: White

Available Sizes: XS - 3X

Product Weight: 5 oz.*

- Five button front closure
- One chest pocket
- Three lower pockets
- Two button, swing back belt
- Shoulder darts



Spectrum took comfort a step further with the twill antimicrobial lab coats.

Made with a heavier, 7 oz.. twill fabric, these styles add a whole new level of professionalism to Spectrum's UltraSmart line of lab coats.

421A 40" Twill Antimicrobial Lab Coat

Fabric: Twill

Color: White

Available Sizes: 28-56

Product Weight: 7 oz.*

- Five button front closure
- One chest pocket
- Two lower pockets
- Two button, swing back belt
- Unisex



405A 44" Twill Antimicrobial Lab Coat

Fabric: Twill

Color: White

Available Sizes: 28-56

Product Weight: 7 oz.*

- Five button front closure
- One chest pocket
- Two lower pockets
- Set-in back belt
- Inside tablet pocket
- Unisex



Our longest lab coat also comes with a handy inner pocket for tablets and other essentials.



Stethoscopes that won't miss a **beat.**



Cardiology Stethoscope Style SM104

Colors: Black, Royal Blue, Red, Pink,
Navy Blue



- Surgical stainless steel
- Chest piece and binaural
- Latex-free tubing
- Dual-sided head
- Non-chill rims
- Superior sound
- Internal spring
- Quality diaphragm
- Split chamber tubing
- Boxed with spare ear pieces





Dual Head Stethoscope Style SM100

Colors: Black, Royal Blue, Navy Blue



- Aluminum chest piece
- Superior sound
- Chrome-plated binaural
- Adjustable binaural
- Latex-free tubing
- Quality diaphragm
- Dual-sided head



Sprague Stethoscope Style SM102

Colors: Black, Royal Blue



- Surgical stainless steel
- Superior sound
- Chest piece and binaural
- Internal spring
- Latex-free tubing
- Quality diaphragm
- Dual-sided head
- Split chamber tubing
- Non-chill rims

Our stethoscopes were tested by leading space engineers and documented to perform as well or better than popular high-priced brands.



Styles SM100, SM102, SM103 & SM104 all ship individually boxed with extra set of ear pieces.

Ask about custom filament covers and custom designed packaging for quantities meeting minimum requirements.



Classic Stethoscope Style SM103

Colors: Black, Royal Blue, Pink, Navy Blue



- Surgical stainless steel
- Non-chill rims
- Chest piece and binaural
- Superior sound
- Latex-free tubing
- Internal spring
- Dual-sided head
- Quality diaphragm



Lightweight Stethoscope Style SM202

Colors: Black, Red, Pink, Purple, Hunter Green



- Aluminum chest piece and binaural
- Superior sound
- Latex-free tubing
- Internal spring
- Dual-sided head
- Quality diaphragm
- Non-chill rims

Shear Madness!



Fluoride EMT Shears SM107F

Colors: Black ●

- 7.5" length
- Fluoride coated blades
- High quality, sharp stainless steel
- High-impact plastic handles
- Autoclavable up to 143°C/290°F
- Individually boxed packaging



EMT Shears SM107

Colors: Black, Royal Blue, Red, Yellow



- 7.5" length
- Stainless steel blades
- Milled serrations
- Dual-sided shearing
- 90° stabilizing tip



High Quality
Stainless steel blades

High Impact
Ergonomically designed handles

Easily Customizable
Pad Printing, UV Printing, or
Engraving—we'll help you choose
the best option for your selection.



Packaged EMT Shears SM107B

Colors: Black, Royal Blue, Red



Same as SM107, but in blister
packaging suitable for POS display.



Utility Scissors SM107S

Colors: Black ●

- 5.5" length
- Stainless steel blades
- Trauma shear
- Soft goods cutting



Bandage Scissors SM118

Colors: Silver ●

- 5.5" length
- Surgical grade stainless steel
- Angled ergonomic form
- Soft goods cutting



Hemostat Scissors SM119

Colors: Silver ●

- 5.5" length
- All stainless steel
- Soft goods cutting



Diagnostic Instruments



Quality instruments available blank or ready to be branded for your organization or special event.



Aneroid Sphygmomanometer

SM109

Colors: Black, Royal Blue, Red

- 0 - 300 mmHg Manometer
- Gauge accuracy ± 3 mmHg
- Nylon cuff range 10" to 16"
- Durable inflation bladder and bulb
- Chrome-plated gauge meter
- One year calibration warranty
- Vinyl bag
- Boxed packaging
- Enclosed printed instructions

Digital Blood Pressure Monitor

SM361

- Standard cuff range 22 to 36cm
- Fully automatic
- Large digital display
- 4 AAA batteries
- 120 Memory
- Storage case
- Boxed packaging
- Enclosed printed instructions



Neurological Buck Hammer **SM111B**

Versatile dual mallet hammer with chrome plating and an 8.75" handle with a pin on the bottom to elicit cutaneous reflexes.

Colors: Black, Royal Blue, Red ● ● ●



Taylor Percussion Hammer **SM111T**

7.5" weighted chrome plated zinc alloy handle is precisely balanced for increased percussive force control. Head suited for provoking myotatic responses while the handle is designed for cutaneous and plantar reflexes.

Colors: Black, Royal Blue, Hunter, Teal



Diagnostic Pen Light **SM106P**

Effectively illuminates a patient's eyes, ears, throat, and measures pupil size and response time.

• 4.5" long • Yellow Illumination



Diagnostic Pen Light **SM106B**

Brightly illuminates the eyes, ears, and throat

• 5" long • White Illumination



Finger Pulse Oximeter **SM359**

• Silicone padding • Two AA batteries • Strong slip resistant clip

Colors: Black



Digital Thermometer **SM355**

• Time 60±10 oral • Beeper function • Accuracy ±0.1°C/±0.2°F



SH100

6-Piece Medical Kit

A medical kit including:

- SM109 (black or royal blue)
- SM103
- SM107S
- SM106B
- Carrying case
- Measuring tape



SH200

3-Piece Medical Kit

A medical kit including:

- SM103
- SM109 (black or royal blue)
- Carrying case



SH300

Basic 3-Piece Medical Kit

A medical kit including:

- SM100
- SM109 (black or royal blue)
- Carrying case



Scrub Caps

235

65/35 PC Poplin drawstring cap in unisex; one size fits all.

Colors: Black, Navy Blue



IR Non-Touch Thermometer

SM357

Fast one-second reading suitable for adults and children. Offers 3 modes of reading for body, room and surface.

Colors: White 



CPR Pocket Resuscitator **SH400**

Designed for mouth to mask ventilation. The cushioned mask has an elastic strap to secure comfortably and quickly. Latex free.

• 4.5"W x 6"H x 2"L • One way valve with filter

Colors: Orange ●



Keychain First Aid Mask **KT-SF04**

CPR keychain face mask enables you to be prepared for any emergency situation. The face shield offers critical protection to both first responders and victims alike and provides illustrated instructions for the user.

Keychain Pouch: • 3" x 1.75" x 1.25"

Face mask: 7.5" x 7.2" x .75"

Colors: Royal Blue ●



Retractable 60" Measuring Tape **SM373**

A must have in the healthcare field for circumferential measurements and documenting wound size. Displays in CM and Inches. Locks for easy reading.

• 2" round • Extends to 60"

Colors: White ○



Graduation Lamp **SM122**

This traditional ceramic base graduation lamp measures 7 x 3 x 8.5 inches and includes a battery operated candle. Individually boxed, the lamp is available blank or can be decorated to commemorate a school or program.

Colors: White ○



Safety Glasses **SM112**

• Durable front and side protection
• Adjustable at temples

Colors: Black ●



Anti-Fog Safety Glasses **SM114**

Provides 99.99% UV protection with anti-glare and an integrated nose pad. Side-shields provide added protection and vented temples provide anti-fog.

Color: Clear



Keeping it together.



Benefits in healthcare facilities

- Reduced risk of falls
- Loss prevention
- Patient convenience
- Branding opportunities



SB-02

Medium Multi-Pocket Carrier

- 12.75"W x 9"H x .125"D
- Easy to use back clips
- 3 front pockets, back clear pocket, inside pocket

Colors: Black, Royal Blue



SB-03

Small Multi-Pocket Carrier

- 13"W x 10"H flat
- 2 side hook loop closures
- 3 front pockets, back clear pocket

Colors: Black, Royal Blue



Perfect for hospital beds, wheelchairs, strollers, lockers and more, these multipurpose bags provide easy storage options for a variety of uses. Easily secured with either buckle clips or velcro, these pocket carriers are ideal for both long-term personal use or short-term multi-user convenience.

Made of 100% polypropylene, fabric can be spot cleaned with soapy water and is earth friendly and recyclable.



SM113

Large Belt Loop Organizer

- 5"W x 6.75"H x .5"L
- Back clip
- Snap/velcro closures
- 3 slide-in pockets

Colors: White, Navy Blue



SM352

Oxford Pocket Organizer

- 3.25"W x 7.25"H x .25"L
- Belt loop attachment
- Snap/velcro closures
- 2 slide-in pockets

Colors: Black



SB107

Nylon Shoe Wallet

- 2.75"W x 3.5"H
- Nylon
- Velcro loop attachment

Colors: Black, Navy Blue, Red



SB105

Nylon Wrist Pouch

- 10"W x 3"H
- Nylon front
- Velcro snap for adjustable usage

Colors: Black, Navy Blue, Red



SB106

Neck Wallet

- 5"W x 5.5"H x .25"L
- 2 zipper pouches
- 1 clear slide-in pocket

Colors: Black, Navy Blue, Red



SM305

Nylon Organizer Case

- 9"L x 6.5"H x 2.25"W
- Velcro side pouch
- Side pouch measures 6" x 3.75"

Colors: Black



SM305L

Nylon Zipper Bag

- 9"L x 5"H x 3.5"W
- Velcro side pouch (7" x 4")
- Carabiner zipper pull

Colors: Black





It's all in the bag!

School, work or travel—bags and backpacks that help get you and your essentials there with ease.



SM375 Rolling Backpack

- 14"W x 19"H x 5.5"L
- 600D Polyester
- 2 side mesh pockets
- Corner mounted wheels
- Hideaway back straps

Colors: Black ●

SM372 Messenger Bag

- 16"W x 12.5"H x 3.5"L
- 2 main compartments
- Front multi-pocket organizer
- Adjustable strap and buckles

Colors: Black ●

Loaded with storage space and plenty of zippered areas with sleeves, this sturdy backpack can be shipped blank, or decorated in house with either embroidery or heat transfer.





SM374

2-in-1 Picnic Bag

- 20"W x 16.5"H x .5"L
- 2 outside pockets
- Side zippers for expanding
- Waterproof

Colors: Navy Blue ●



SB100

Multi-Functional Travel Tote Bag

- 14.25"W x 16"H x 4"L
- Outside slide-in pocket
- Inner zipper pocket

Colors: Royal Blue, Red ● ●



SB101

Tote Bag

- 14"W x 14.25"H x 3"L
- One top zipper pocket

Colors: Black, Royal Blue ● ●

SM353

Oxford Two Color Duffel Bag

- 21"W x 11"H x 9"L
- Outside zipper pocket
- Colored stripe on either side
- Adjustable strap

Colors: Royal Blue/Black, Red/Black ● ●



SB103

Large Two-Toned Duffel Bag

- 19"W x 11"H x 11.5"L
- U-shaped zipper closure
- Two large side zipper pockets
- Front pocket

Colors: Khaki/Black, Grey/Black ● ●



Don't know your size?



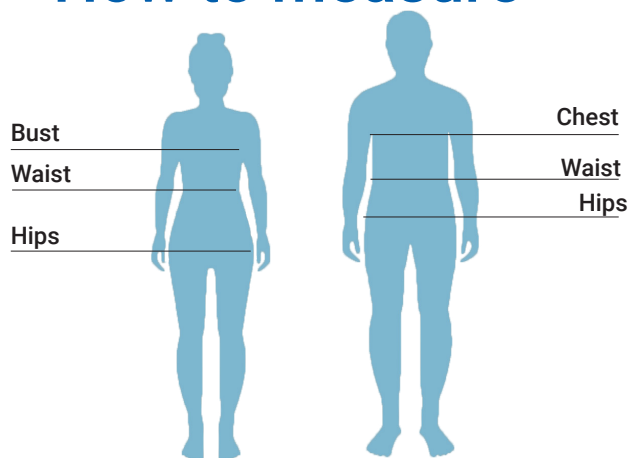
What you will need

- ▣ Standard tape measure
- ▣ Fitted undergarments
- ▣ Someone to assist

Tips & Tricks

- ▣ Keep tape taut, not tight
- ▣ Measure loosely for wearing ease
- ▣ Measure twice for accuracy

How to measure



Chest

Measure around the fullest part of the chest, keeping tape parallel to the floor

Waist

Bend to side and measure where body curves (even if you wear your pants lower)

Hips

With feet shoulder-width apart, measure fullest part of hip/thigh area

Need a specific custom size or change to a garment? Just ask!

We have an in-house custom sewing team that can help with any changes to the standard sizes that you need.

Charts below:

Use this charts below to determine your size. If one of the measurements is in between two sizes, order the smaller size for a tighter fit or the larger size for a looser fit. If your measurements for waist and hips correspond to two different suggested sizes, order the one indicated by your hip measurement.

Tops

Unisex

SIZE	XXS	XS	S	M	L	XL	2X	3X	4X	5X	6X	7X	8X
CHEST	31-33	34-36	37-39	40-44	45-47	48-50	51-53	54-56	57-59	60-63	64-67	68-70	71-73

Women

SIZE	XXS	XS	S	M	L	XL	2X	3X	4X	5X	6X	7X	8X
BUST	34-36	37-39	40-42	43-44	45-46	47-48	49-50	51-53	54-56	57-59	60-63	64-66	67-70

Lab Coats

Unisex

SIZE	XXS	XS	S	M	L	XL	2X	3X	4X	5X	6X	7X	8X
CHEST	30-33	34-37	38-40	41-43	44-47	48-52	53-55	56-58	59-62	63-66	67-71	72-76	77-82

Women

SIZE	XXS	XS	S	M	L	XL	2X	3X	4X	5X	6X	7X	8X
BUST	31-33	34-37	38-40	41-45	46-48	49-54	55-57	58-60	61-64	65-68	69-71	72-75	76-81

Pants

Unisex

SIZE	XXS	XS	S	M	L	XL	2X	3X	4X	5X	6X	7X	8X
WAIST	23-26	27-28	29-31	32-34	35-37	38-40	41-43	44-45	46-48	49-50	51-55	56-57	58-61
HIP	32-34	35-38	39-40	41-43	44-47	48-50	51-55	56-58	59-62	63-68	69-76	77-88	89-96
REGULAR INSEAM	30-31	30-31	30-31	31-32	31-32	31-32	32-33	32-33	32-33	32-34	32-34	33-34	33-34
PETITE INSEAM	28	28	29	29	29	29	29	30	30	30			
TALL INSEAM	34	34	34	35	36	36	36	37	37	37			

Size Comparison

XS	S	M	L	XL	2X	3X	4X	5X	6X	7X	8X
28-30	32-34	36-38	40-42	44-46	48-50	52-54	56-58	60-62	64-66	68-70	72-74



SPECTRUM
spectrumuniforms.com

ASI 88680 & 88681 ● SAGE 67803

PPAI 232515 ● UPIC SPECT 177 ● DC 229440



Looking for a custom color or design? Ask about our VMI Program.



Fast and efficient turn around on blank goods.



Product pieces individually bagged, including large bulk orders upon request.