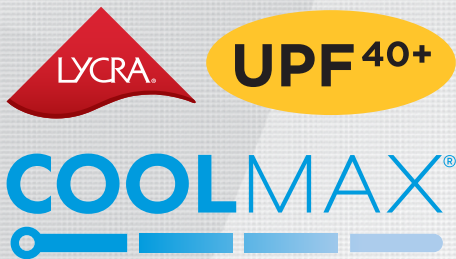


2 0 2 1 C A T A L O G



maevn



Versatile
&
Comfortable



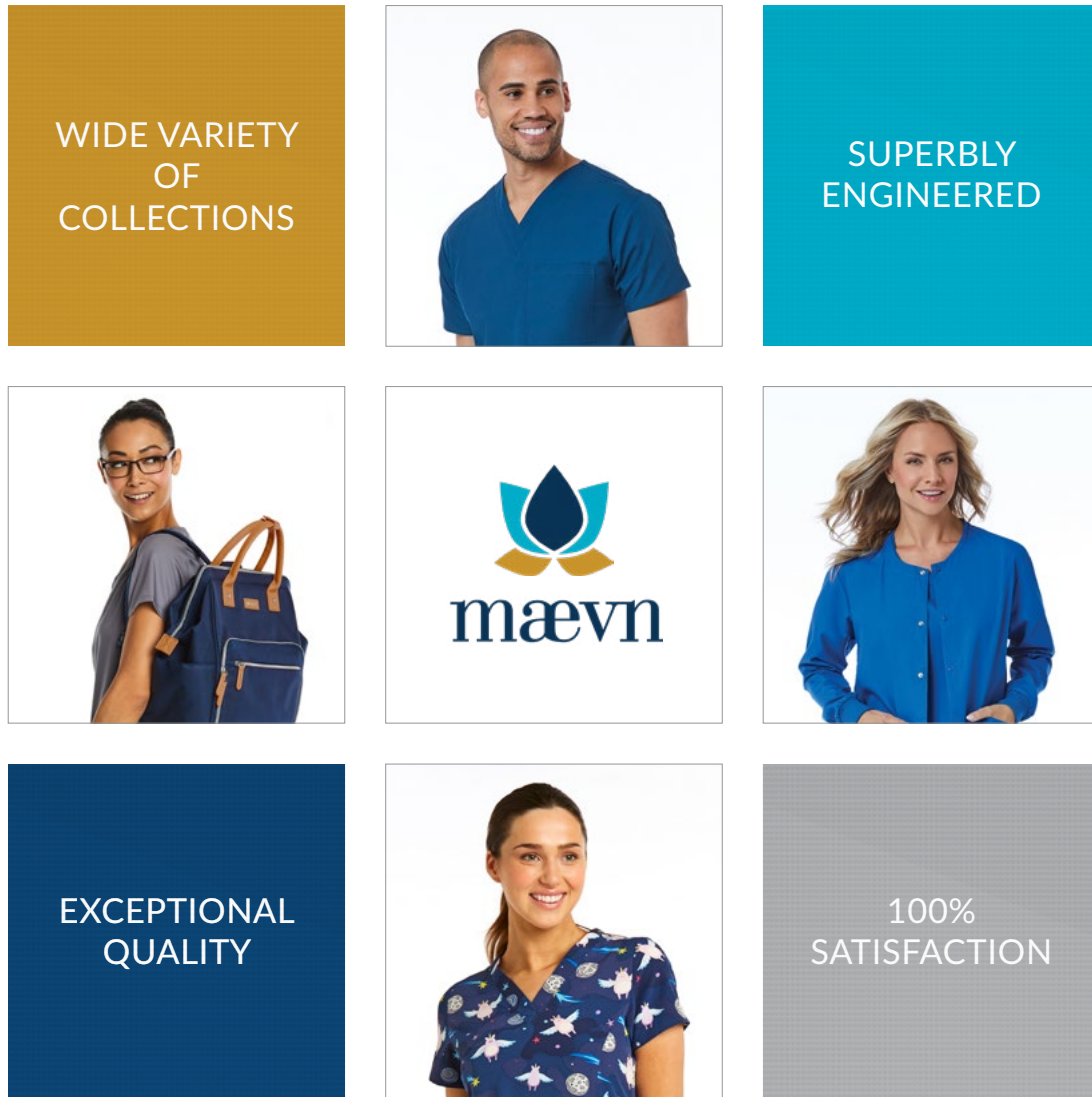
HIGH

Performance
Durability
Comfort Stretch

TOP
EON SPORT: 1778-RYL

BOTTOM
EON SPORT: 7378-RYL

From superior design to world-class development,
we provide the highest standards to all our customers.



OUR MISSION

We strive to be your number one supplier of medical uniforms. We are committed to delivering a superb product through exceptional quality, unquestionable reliability, and outstanding customer service while maintaining competitive pricing.



CONTENTS

Top-Selling Collections

Matrix	4
Matrix Impulse	11
Matrix Pro	15
EON Sport	17
EON	20
Bestee/Knits	26/27

Collections

Pure Soft	28
Primaflex	30
Blossom	32
Red Panda	34
Core	40
Blaze	43
Smart	44
Lab Coats	45
Prints	48

Accessories	54
--------------------	-----------

Group Sales	60
--------------------	-----------

Color Guide	67
--------------------	-----------

Sizing Guide	74
---------------------	-----------

Placing an Order	75
-------------------------	-----------

Customer Service	75
-------------------------	-----------

TOP
BESTEE: 6909-CRB
MATRIX IMPULSE: 4520-BLK

BOTTOM
MATRIX IMPULSE: 8510-BLK

TOP SELLER

65% Polyester 32% Rayon
3% Spandex

MATRIX

C High Comfort Stretch

Our new Matrix collection offers everything you are looking for!
Perfectly designed to fit your function and style.

- Super soft fabric
- Durable stretch
- Professional style and fit

Function
with
Confidence



TOP
MATRIX: 3701-PEW

BOTTOM
MATRIX: 6501-PEW



3501 DOUBLE V-NECK TOP

Reg: XXS - XL Length (M): 27.25"
 Plus: 2XL - 3XL Length (M): 27.25"
 Short: XS - XL Length (M): 25.75"



Front and back v-neck top. Two front slant patch pockets. Utility tape in the left pocket. Single welt pocket. Dyed-to-match utility loop on the left shoulder seam. Front and back vertical seams. Side vents.

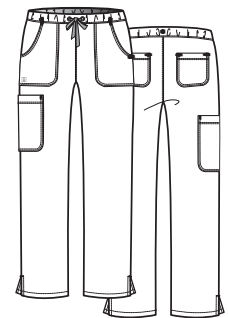


CBL RYL GBL NVY TEL CRB OLV EGP WIN RED HPK MNT WMN PEW BLK ARB FSM DHA WHT
 NEW NEW NEW 3501 ONLY



6501 FULL ELASTIC WAIST CARGO PANT

Reg: XXS - XL (31")
 Plus: 2XL - 3XL (31")
 Petite: XS - 2XL (28.5")
 Tall: SM - XL (33.5")



Tapered pant with full elastic waistband. Dyed-to-match grommets and drawstring. Two front curved patch pockets. Single patch cargo pocket on the right side and two back patch pockets. Side vents.



65% Polyester 32% Rayon 3% Spandex High Comfort Stretch

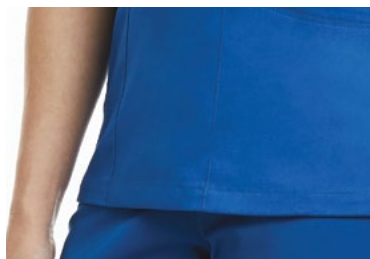
MATRIX

3701 CURVED MOCK WRAP TOP

Reg: XXS - XL

Plus: 2XL - 3XL Length (M): 27.75"

Curved mock wrap top. Two front slant patch pockets. Contrast utility tape in the left pocket. Utility pocket on the right side. Dyed-to-match side knit panel. Dyed-to-match utility loop on the left shoulder seam. Front and back princess seams. Side vents.



6701 FULL ELASTIC WAISTBAND SEMI-JOGGER PANT

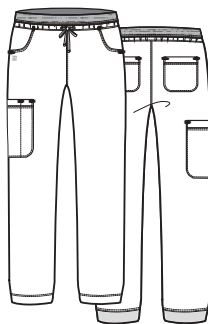
Reg: XXS - XL (30")

Plus: 2XL - 3XL (30")

Petite: XS - 2XL (27.5")

Tall: SM - XL (32.5")

Full elastic waistband. Dyed-to-match drawstring with grommets. Semi-jogger pant with stylized half elastic ankle band. Side cargo patch pocket. Two back patch pockets.



3502 HEATHERED DOUBLE V-NECK TOP

Reg: XXS - XL

Plus: 2XL - 3XL

Length (M): 27.25"

Front and back v-neck top with heathered neckband.
 Single heathered trim welt pocket. Two slant patch pockets. Utility tape in the left pocket.
 Dyed-to-match utility loop on the left shoulder seam.
 Front and back vertical seams. Side vents.



NEW NEW NEW

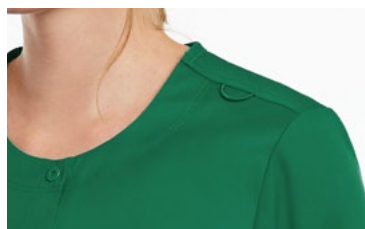
7701 LONG SLEEVE ROUND NECK SNAP JACKET

Reg: XS - XL

Plus: 2XL - 3XL

Length (M): 27.75"

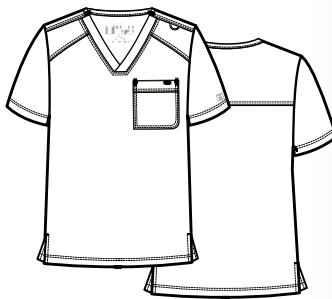
Long sleeve round neck snap button jacket.
 Two front patch pockets. Utility tape in the left pocket. Welted utility pocket.
 Dyed-to-match half elastic at lower sleeve hem.
 Utility loop on the left shoulder seam. Side vents.



5501 MEN'S BASIC V-NECK TOP

Reg: XS - XL

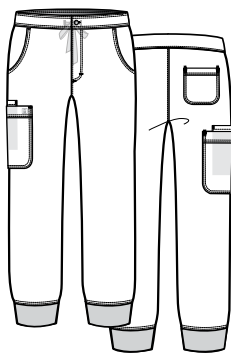
Plus: 2XL - 3XL Length (M): 29.25"

*Men's v-neck top.**Single chest pocket with a pen slot.**Dyed-to-match utility loop on the left shoulder seam.**Side vents. Back yoke.***8501 MEN'S HALF ELASTIC WAISTBAND JOGGER PANT**

Reg: XS - XL (29")

Plus: 2XL - 3XL (29")

Short: XS - 2XL (26.5")

*Men's half elastic waistband pant with knitted ankle cuff.**Dyed-to-match inner drawstring.**Two front curved pockets. Single patch cargo pocket with inner utility pocket. Single back patch pocket on the right side.*



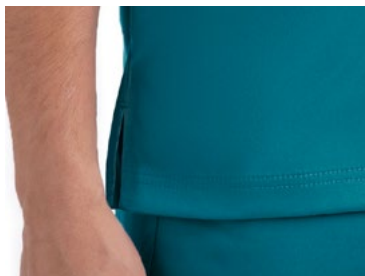
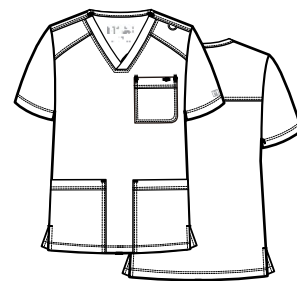
5502 MEN'S 3-POCKET V-NECK TOP

Reg: XS - XL

Plus: 2XL - 3XL

Length (M): 29.75"

Men's v-neck top. Single chest pocket with a pen slot. Two front patch pockets. Dyed-to-match utility loop on the left shoulder seam. Side vents. Back yoke.



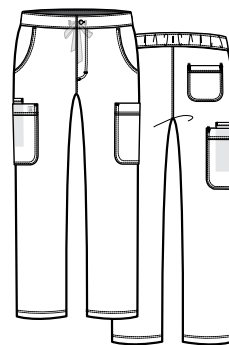
8502 MEN'S HALF ELASTIC WAISTBAND CARGO PANT

Reg: XXS - XL (31")

Plus: 2XL - 3XL (31")

Short: XS - 2XL (28.5")

Men's half elastic waistband pant with tapered leg. Dyed-to-match inner drawstring. Two front curved pockets. Two cargo patch pockets. Single inner utility pocket on the right leg. Single back patch pocket.



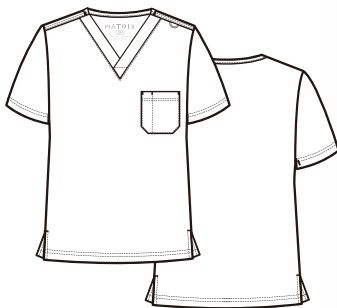
65% Polyester 32% Rayon 3% Spandex High Comfort Stretch

MATRIX

3500 UNISEX V-NECK TOP

Reg: XS - XL

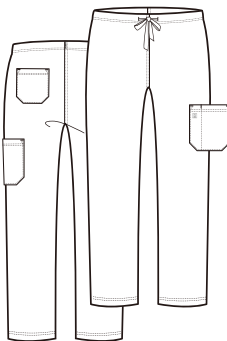
Plus: 2XL - 5XL Length (M): 28.75"

*V-neck top.**Single chest pocket with a pen slot.**Utility loop on the left shoulder seam.**Side vents.***6500 UNISEX BASIC PANT**

Reg: XS - XL (31")

Plus: 2XL - 5XL (31")

Short: XS - 2XL (28.5")

*Slightly tapered pant leg.**Single cargo patch pocket with a pen slot.**Dyed-to-match drawstring with tied waist.**Single back patch pocket.*

TOP SELLER

92% Polyester 8% Spandex

MATRIX
IMPULSE

Our new Matrix collection offers everything you are looking for!
Perfectly designed to fit your function and style.

- Super soft fabric
- Durable stretch
- Professional style and fit

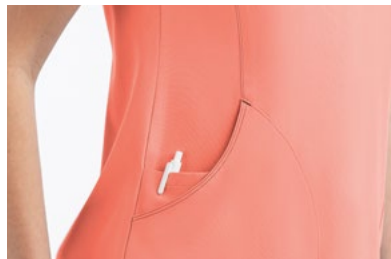
C High Comfort Stretch

4510 CONTRAST CURVED V-NECK TOP

Reg: XS - XL

Plus: 2XL - 3XL Length (M): 27.75"

Women's v-neck top with contrast/dyed-to-match neckband and decorative contrast stitching. Two curved patch pockets at side seam. Single inner utility pocket. Side vents.



CBL RYL NVY WIN HPK PEW BLK WMN ARB FSM = Contrast Color
NEW NEW

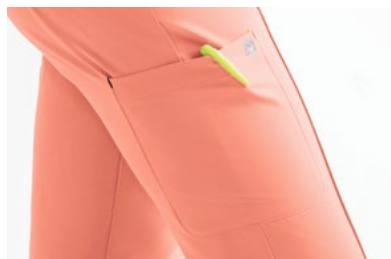
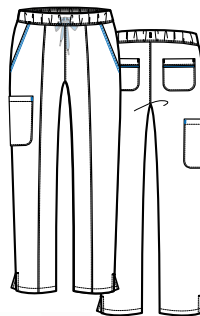
8510 FULL ELASTIC WAISTBAND PANT

Reg: XS - XL (30.5")

Plus: 2XL - 3XL (30.5")

Petite: XS - 2XL (28")

Women's full elastic waistband pant with tapered leg. Dyed-to-match inner drawstring. Two front slant pockets. Single cargo patch pocket. Two back patch pockets with contrast piping. Side vents.



CBL RYL GBL NVY CRB OLV WIN HPK PEW BLK WMN ARB FSM = Contrast Color
NEW NEW

4520 CONTRAST KNIT PANEL MOCK WRAP TOP

Reg: XS - XL

Plus: 2XL - 3XL Length (M): 27.25"

Women's mock wrap top. Contrast/dyed-to-match knit side panel. Two front patch pockets. Utility tape in the left pocket. Utility tape in the left pocket.



8520 KNIT YOGA WAISTBAND JOGGER PANT

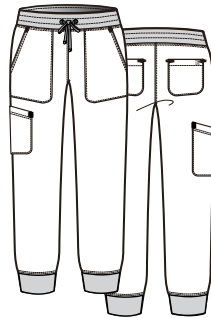
Reg: XS - XL (28.5")

Plus: 2XL - 3XL (28.5")

Petite: XS - 2XL (26")

Tall: XS - 2XL (31")

Women's knitted yoga waistband pant. Jogger style leg with knit fabric. Contrast drawstring with grommets. Two front slant patch pockets. Single slant cargo pocket. Two back patch pockets.





4511 WOMEN'S CURVED V-NECK TOP

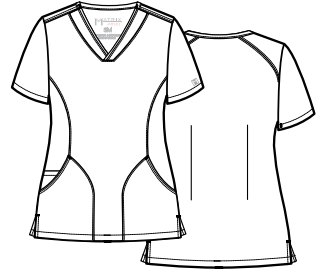
Reg: XS - XL

Plus: 2XL - 3XL Length (M): 27.25"

Women's v-neck top.

Two front curved patch pockets at side seam.

Single inner utility pocket. Front princess seams and back darts. Side vents.



92% Polyester 8% Spandex C High Comfort Stretch

4521 WOMEN'S KNIT PANEL MOCK WRAP TOP

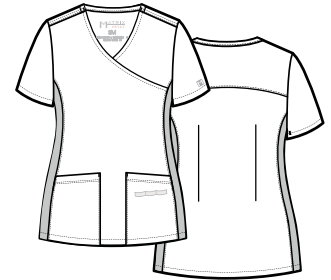
Reg: XS - XL

Plus: 2XL - 3XL Length (M): 27.25"

Women's mock wrap top.

Dyed-to-match knit side panel for added extra flexibility. Two front patch pockets.

Utility tape in the left pocket. Back yoke and darts for added shape and style.



MATRIX IMPULSE

4530 WOMEN'S TUCK-IN TOP

Reg: XS - XL

Plus: 2XL - 3XL Length (M): 25.75"

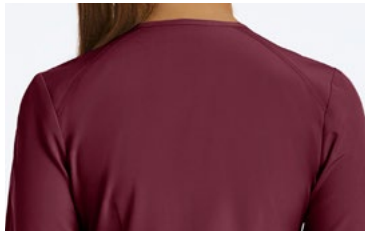
Women's curved v-neck top with curved hemline.
Single welt pocket at the chest.
Back shoulder seams and darts for added shape and style. Side vents.

**7510 WOMEN'S ROUND NECK SNAP JACKET**

Reg: XS - XL

Plus: 2XL - 3XL Length (M): 27.75"

Women's snap button jacket. Long sleeve with full ribbed cuff. Two front patch pockets. Single inner utility pocket on the right side. Utility tape in the left pocket. Front princess seams and back shoulder seams with darts for added style and shape. Side vents.



TOP SELLER

PRO
MATRIX

P High Performance

**74% Polyester 20% Rayon
6% Spandex**

Matrix got even better. Welcome Matrix Pro!

- Soft and smooth heather fabric
- Durable and stretchy
- Professional style and fit

3901 CONTRAST LAYERED V-NECK TOP

Reg: XXS - XL

Plus: 2XL - 3XL Length (M): 27.25"

Heather fabric v-neck top with layered contrast fabric neckband. Two front patch pockets. Utility tape in the left pocket. Single contrast welt pocket. Utility loop on the left shoulder seam. Decorative detail at side seam. Side vents.



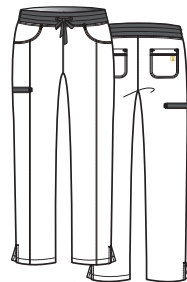
HGR HNV

6901 CONTRAST YOGA WAISTBAND PANT

Reg: XXS - XL (31") Petite: XS - 2XL (28.5")

Plus: 2XL - 3XL (31") Tall: S - XL (33.5")

Full contrast heather fabric yoga style waistband pant with tapered leg. Side vents. Dyed-to-match drawstring with grommets. Two front curved pockets. Single contrast welt cargo pocket. Two back patch pockets.

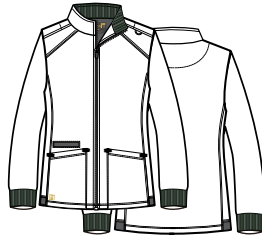


7091 COMFY WARM-UP JACKET

Reg: XS - XL

Plus: 2XL - 3XL Length (M): 27.25"

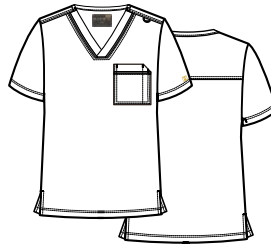
Long sleeve jacket with contrast inner knit rib collar. Two slant patch pockets with contrast welt utility pocket. Contrast knit rib band at sleeve cuff. Contrast elastic at side panel hem. Utility loop on the left shoulder seam.

**5901 MEN'S CONTRAST PIPING V-NECK TOP**

Reg: XS - XL

Plus: 2XL - 3XL Length (M): 29.25"

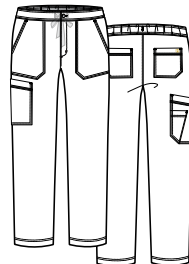
Men's v-neck top. One chest pocket with a pen slot. Dyed-to-match utility loop on the left shoulder seam. Decorative contrast detail at front neckband and chest pocket. Side vents.

**8901 MEN'S HALF ELASTIC WAISTBAND CARGO PANT**

Reg: XS - XL (31") Short: XS - 2XL (28.5")

Plus: 2XL - 3XL (31")

Men's half elastic waistband cargo pant with tapered leg. Dyed-to-match drawstring. Two front angled patch pockets. Two back patch pockets. Single angled patch cargo pocket with scissor pocket.



TOP SELLER

EON
SPORT

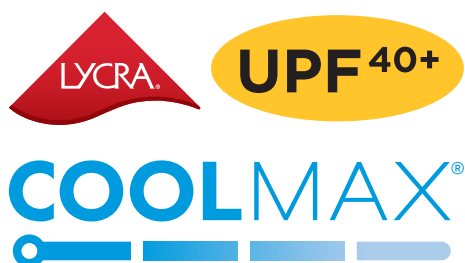
P High Performance

59% Polyester 22% Rayon
19% Elastell-P

Look and feel great — all day long!

- Stay dry all day with COOLMAX® breathable fabric technology
- Moisture-wicking fibers to help reduce bacterial growth
- Temperature control
- Soft and flexible
- Shape retention

with



Maximum Mobility
While You
Stay Dry



TOP
EON SPORT: 1778-IFB

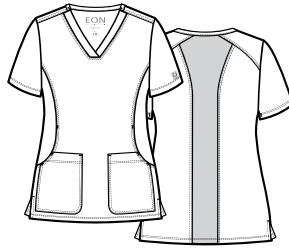
BOTTOM
EON SPORT: 7378-IFB

1768 SPORTY & COMFY MULTI POCKET V-NECK TOP

Reg: XS - 1XL

Plus: 2XL - 3XL Length (M): 27.25"

Women's v-neck top. Two side pockets and two front pockets. Back shoulder panel for added style and shape. Dyed-to-match center back knit panel for added elastic and comfort. Silicone silver logo patch on the left sleeve. Side vents.

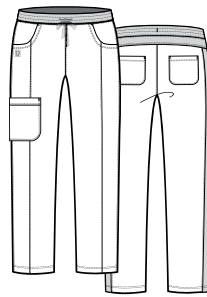
**7368 SPORTY & COMFY FULL ELASTIC WAISTBAND PANT**

Reg: XS - 1XL (Inseam: 30.5")

Plus: 2XL - 3XL (Inseam: 30.5")

Petite: XS - 2XL (Inseam: 28")

Women's full elastic yoga style waistband pant. Dyed-to-match inner drawstring. Two front curved pockets. Microspan waistband. Single cargo patch pocket and two back patch pockets. Dyed-to-match side knit panel and back yoke for added elastic and comfort. Silicone silver logo patch on the right curved pocket. Side vents.



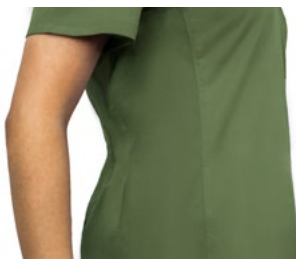
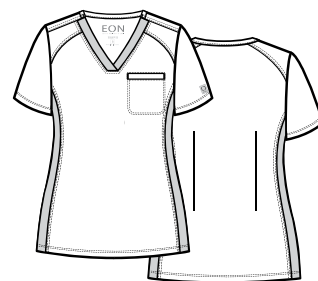


1778 SPORTY CHEST POCKET V-NECK TOP

Reg: XS - 1XL

Plus: 2XL - 3XL Length (M): 26.75"

Women's v-neck top with knitted front neckband. Single chest welt pocket. Back shoulder panel for added style and shape. Dyed-to-match side knit panel for added elastic and comfort. Silicone silver logo patch on the left sleeve.



RYL NRV IFB OLV CHR BLK



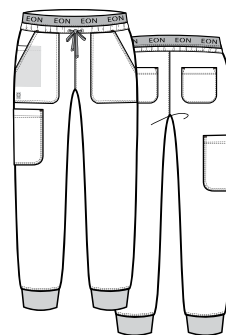
7378 SPORTY FULL ELASTIC LOGO WAISTBAND JOGGER PANT

Reg: XS - 1XL (Inseam: 28.5")

Plus: 2XL - 3XL (Inseam: 28.5")

Petite: XS - 2XL (Inseam: 26")

Women's full elastic logo waistband pant. Dyed-to-match shell fabric drawstring. Microspan cuff. Two front patch pockets. Single inner utility pocket. Single cargo patch pocket and two back patch pockets. Jogger style dyed-to-match knit leg hem. Silicone silver logo patch on the bottom of the right side curved pocket.



59% Polyester 22% Rayon

19% Elastell-P

COOLMAX

LCRA

UPF 40+

P

High Performance

EON SPORT

TOP SELLER

EON

P High Performance
with

COOLMAX®



UPF 40+

Fabric Technology from
The LYCRA Company

59% Polyester 22% Rayon 19% Elastereil-P
Mesh: 83% Polyester 17% Spandex

The work of a medical professional never slows down
— neither should your scrubs!

- Stay dry all day with COOLMAX® breathable fabric technology
- Moisture-wicking fibers to help reduce bacterial growth
- Long-lasting color • Shape retention
- Durable elastic for flexibility

1708 V-NECK POCKET TOP

Reg: XXS - XL
Plus: 2XL - 3XL Length (M): 27.75"

V-neck top. Welt pocket at waist with triangle ring.
Two front patch pockets. Utility tape in the left
pocket. Small hidden patch pocket.
Princess seams and back darts. Side vents.

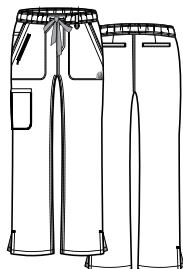


CBL MBL RYL GBL TNY TBL CRB SKY HTR LVR GRP EGP WIN RED SBP KHI PEW CHR BLK WHT

7308 FULL ELASTIC ZIPPER POCKET CARGO PANT

Reg: XXS - XL (30.5") Petite: XXS - 3XL (28")
Plus: 2XL - 3XL (30.5") Tall: XS - 3XL (33")

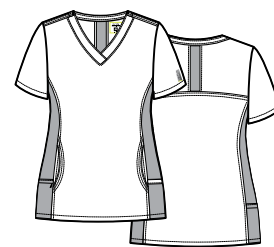
Full elastic waistband.
Dyed-to-match drawstring. Belt loop ring.
Two front slant patch pockets, inner utility pocket,
zipper pocket, welt cargo pocket.
Two back welt pockets. Side vents.



1718 SPORTY MESH PANEL TOP

Reg: XXS - XL

Plus: 2XL - 3XL Length (M): 27.75"



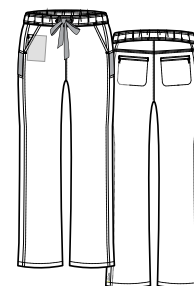
Curved v-neck top. Mesh side panels.
Curved back yoke with mesh panel and detailing
inside. Single side pocket with zipper and single
side pocket with twill tape. Two front curved pockets.



7318 SPORTY MESH PANEL PANT

Reg: XXS - XL (30.5") Petite: XXS - 3XL (28")

Plus: 2XL - 3XL (30.5") Tall: XS - 3XL (33")



Straight leg pant with side panels and mesh piecing.
Full elastic waistband with grommets and
dyed-to-match drawstring. Two front slant pockets.
Single inner utility pocket. Two back pockets with zippers.

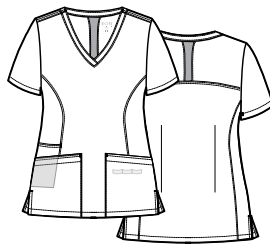


1738 BACK MESH PANEL SHAPED V-NECK TOP

Reg: XXS - XL

Plus: 2XL - 3XL Length (M): 27.75"

Two front patch pockets. Utility tape in the left pocket. Single inner mesh utility pocket. Back yoke with mesh panel and detailing inside. Princess seams and back darts. Side vents.

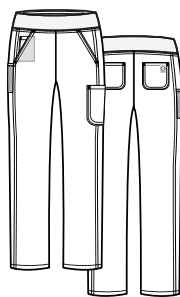


7338 7-POCKET YOGA SCRUB PANT

Reg: XXS - XL (30.5") Petite: XXS - 3XL (28")

Plus: 2XL - 3XL (30.5") Tall: XS - 3XL (33")

Tapered pants with yoga style waistband. Two front slant pockets. Single inner utility pocket. Single mesh pocket with twill tape. Two back patch pockets. Single cargo pocket.

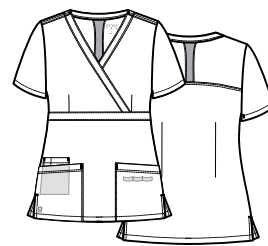


1748 BACK MESH PANEL MOCK WRAP TOP

Reg: XXS - XL

Plus: 2XL - 3XL Length (M): 27.75"

V-neck top. Curved back yoke with mesh panel and detailing inside. Two front patch pockets. Utility tape in the left pocket. Single inner utility pocket. Empire waist with front and back darts. Side vents.

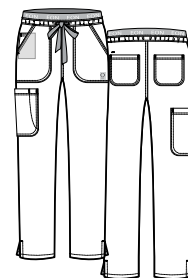


7348 7-POCKET WAISTBAND CARGO PANT

Reg: XXS - XL (30.5") Petite: XXS - 3XL (28")

Plus: 2XL - 3XL (30.5") Tall: XS - 3XL (33")

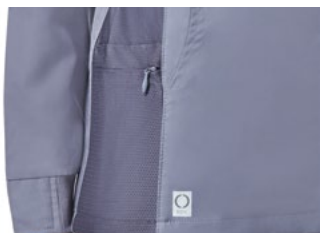
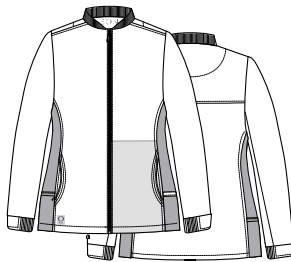
Tapered pants with EON logo branded waistband. Dyed-to-match drawstring. Two front slant pockets. Single inner utility pocket. Two back patch pockets. Single cargo pocket with scissor pocket. Side vents.



8708 SPORTY MESH PANEL JACKET

Reg: XXS - XL
 Plus: 2XL - 3XL Length (M): 27"

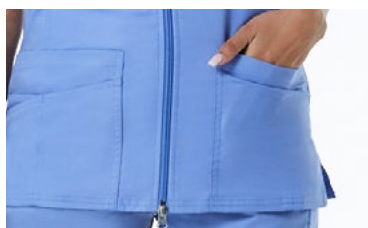
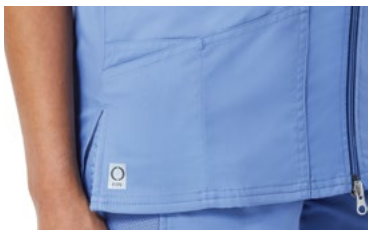
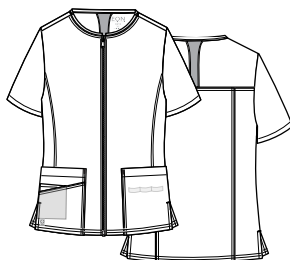
Round neck knit rib collar jacket.
 Mesh side panels. Dyed-to-match zipper.
 Half rib trim cuff. Two curved front pockets.
 Inner utility pocket. Side pocket with zipper and side
 pocket with twill tape. Back yoke with self-facing fabric.



8728 BACK MESH PANEL SHORT SLEEVE ZIP JACKET

Reg: XXS - XL
 Plus: 2XL - 3XL Length (M): 28.25"

Short sleeve round neck zipper jacket. Three patch
 pockets with single hidden pocket. Utility tape in the
 left pocket. Dyed-to-match zipper. Back yoke with
 double needle stitching and mesh panel with detailing
 inside. Princess seams at the front. Side vents.





5208 MEN'S SINGLE CHEST POCKET V-NECK TOP

Reg: XXS - XL

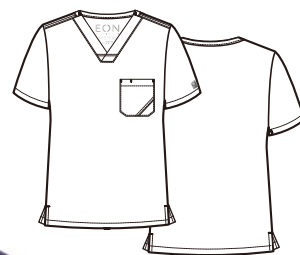
Plus: 2XL - 3XL

Length (M): 30.75"

Men's v-neck top.

Single chest pocket with a pen slot.

Decorative stitching on pocket. Side vents.



CBL RYL TNY PEW BLK



5308 MEN'S MESH PANEL 3-POCKET V-NECK TOP

Reg: XXS - XL

Plus: 2XL - 3XL

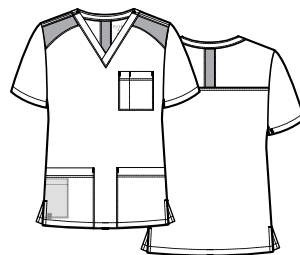
Length (M): 30.75"

V-neck top. Two patch pockets with single

hidden pocket. Single chest pocket with a pen slot.

Curved mesh panel on the shoulders.

Back yoke with mesh panel. Side vents.



CBL RYL TNY CRB HTR WIN KHI PEW CHR BLK



8308 MEN'S HALF ELASTIC 8-POCKET CARGO PANT

Reg: XXS - XL (31")

Short: XXS - 3XL (28.5")

Plus: 2XL - 3XL (31")

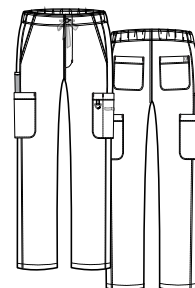
Tall: XS - 3XL (33.5")

Half elastic waistband tapered pant.

Dyed-to-match drawstring. Two front slant pockets.

Two cargo pockets. Mesh pocket with twill tape.

Pen slot pocket with triangle ring. Two back patch pockets.



TOP SELLER

90% Polyester 10% Lycra



Bestee

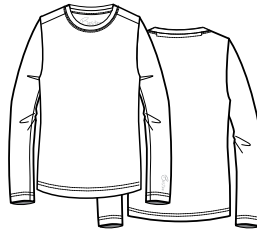
What scrub outfit is complete without an underscrub?
We call it the Bestee - worn under any top to fit any style.
You'll want to wear it anywhere, everyday.

- Ultra-stretch Lycra fabric • Soft and comfortable
- Available in a wide range of colors • Form-fitting to keep you warm

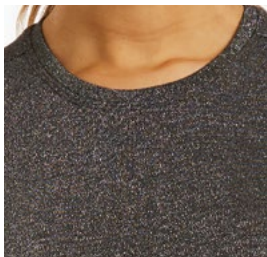
6909 BESTEE LONG SLEEVE UNDERSCRUB TEE

Reg: XXS - XL
Plus: 2XL - 3XL Length (M): 26.75"

Round neck long sleeve tee.
Made with Lycra® elastic performance fabric.
Heat transferred patch at sleeve hem.



90% Polyester 10% Lycra



CBL RYL NVY ALM AQU RTL LCO PPC UVI WIN PEW BLK WHT RED CRB MSV HGR
NEW NEW NEW NEW



The Lycra fiber blend enhances color fastness,
long lasting fit and shape retention, and resists
damage caused by perspiration and UV rays.

BESTEE

TOP SELLER

COOLMAX®

ANTIMICROBIAL

KNITS

Feel amazing in these super soft tops.

- COOLMAX® breathable fabric technology
- Moisture-wicking fibers to help reduce bacterial growth
- Soft, comfortable material keeps you warm

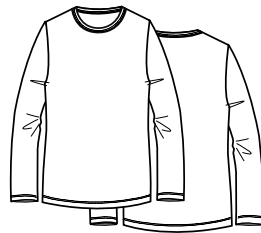
6709 UNDERCOOL LONG SLEEVE UNDERSCRUB TEE

Reg: XS - XL

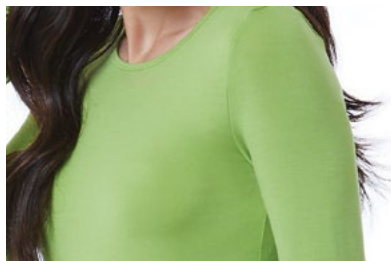
Plus: 2XL - 3XL Length (M): 26.75"

Round neck long sleeve tee.

COOLMAX® moisture-wicking performance fabric.



60% Rayon 35% Polyester 5% Spandex



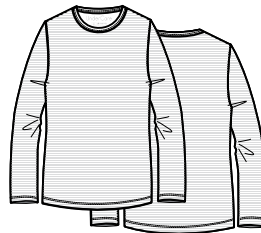
6809 UNDERCARE LONG SLEEVE UNDERSCRUB TEE

Reg: XS - XL

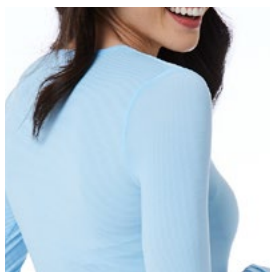
Plus: 2XL - 3XL Length (M): 26.75"

Round neck long sleeve underscrub striped tee.

Antimicrobial eliminates germs and odors.



80% Nylon 20% Spandex



KNITS

pure

S o f t

96% Polyester 4% Spandex

Take on your busy day with this cozy collection.

- Soft, velvety fabric
- Durable and flexible
- Professional look

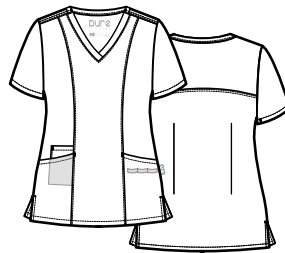
P High Performance

1901 3-PANEL V-NECK TOP

Reg: XXS - XL

Plus: 2XL - 3XL Length (M): 27.75"

Curved v-neck top. Two front slant pockets. Single inner utility pocket. Utility tape in the left pocket. Princess seams at the front. Curved back yoke with double needle stitching. Back darts. Side vents.

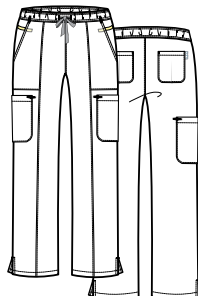


7901 REFLECTIVE CARGO PANT

Reg: XXS - XL (30.5") Petite: XS - 3XL (28")

Plus: 2XL - 3XL (30.5") Tall: XS - 2XL (33")

Full elastic waistband. Dyed-to-match drawstring. Belt loop ring. Two front slant patch pockets, inner utility pocket, zipper pocket, welt cargo pocket. Two back welt pockets. Side vents.





1902 MODERN V-NECK TOP

Reg: XXS - XL

Plus: 2XL - 3XL Length (M): 27.75"

Curved v-neck top. Front and back shoulder panels. Curved back mesh panel below neckband. Two front curved pockets. Single inner utility pocket. Side vents.



96% Polyester 4% Spandex

P High Performance

PURE SOFT



7902 ADJUSTABLE FLARE YOGA PANT

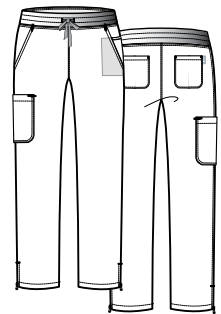
Reg: XXS - XL (30.5")

Plus: 2XL - 3XL (30.5")

Petite: XS - 3XL (28")

Tall: XS - 2XL (33")

Tapered pants with yoga style waistband. Dyed-to-match drawstring. Two front slant pockets. Single inner utility pocket. Single cargo pocket. Two back patch pockets. Adjustable zipper at hemlines.



PrimaFlex

52% Cotton 35% Polyester
13% Elastell-P



P High Performance

When you are on-the-go and need reliability.

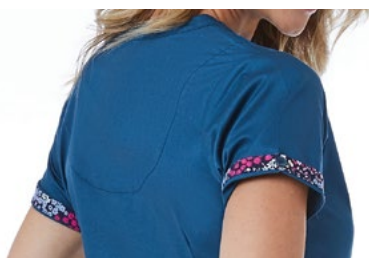
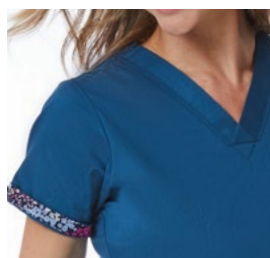
- Enhanced color brightness
- Solid color option or with inner beauty print at sleeve cuff and back side of neckline

1722 INNER BEAUTY V-NECK TOP

Reg: XS - XL

Plus: 2XL - 3XL Length (M): 27.75"

Two front patch pockets. Two lower patch pockets on right side. Logo loop pen pocket. Two-way fold-over sleeve. Dyed-to-match button. Inner contrast print at sleeve cuff and neck facing. Front and back darts. Side vents.



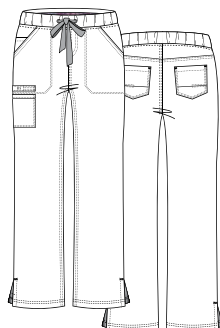
▲ = Contrast Color

7322 INNER BEAUTY STRAIGHT LEG PANT

Reg: XS - XL (30.5") Petite: XS - 3XL (28")

Plus: 2XL - 3XL (30.5")

Full elastic waistband straight leg pant. Two front slant pockets. Single inner utility pocket. Two back patch pockets. Logo loop pen pocket. Inner contrast print at waistband and front slant pockets. Dyed-to-match drawstring with grommet. Side vents.





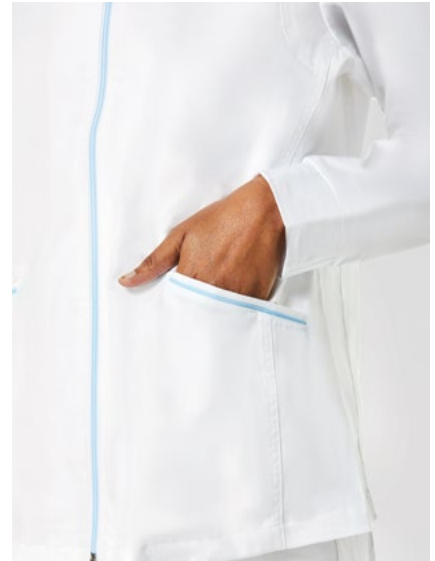
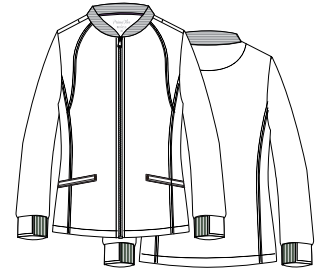
8702 WARM-UP ZIP JACKET

Reg: XS - XL

Plus: 2XL

Length (M): 27"

Round neck knit rib collar jacket. Two-tone zipper. Two slant welt pockets with contrast piping. Half rib trim cuff. Contrasting detail at back neck. Decorative lines with double needle stitching.



52% Cotton 35% Polyester 13% Elastell-P



P

High Performance

PRIMAFLEX

Flexibility
& High
Performance

TOP
PRIMAFLEX: 8702-TNY

BOTTOM
PRIMAFLEX: 7322-TNY



TOP
PRIMAFLEX: 1722-CBL
PRIMAFLEX: 8702-WHT

BOTTOM
PRIMAFLEX: 7322-CBL

blossom

55% Cotton 42% Polyester
3% Spandex

Create a classic look with this collection.

C High Comfort Stretch

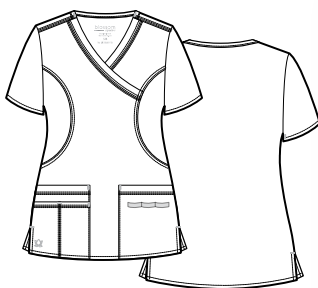
- Breathable stretch fabric
- Comfortable fit
- Plenty of pockets

1102 MOCK WRAP TOP

Reg: XS - XL

Plus: 2XL - 5XL Length (M): 27.5"

Two front patch pockets. Two lower pockets on the right side. Utility tape in the left pocket. Contrast bartacks. Princess seams. Triple needle stitching. Side vents.

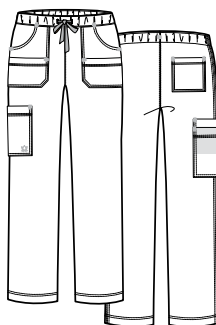


9202 UTILITY CARGO PANT

Reg: XS - XL (30.5") Petite: XS - 3XL (28")

Plus: 2XL - 5XL (30.5") Tall: XS - 3XL (33.5")

Boot-cut leg with full elastic waistband. Two front multi-pockets. Back patch pocket. Cargo pocket and inner utility pocket. Contrast drawstring and bartacks. Triple needle stitching.



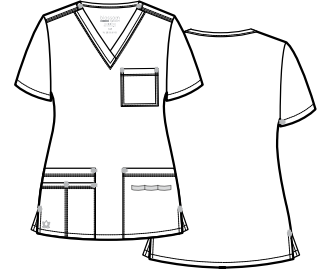


1202 3-POCKET V-NECK TOP

Reg: XS - XL

Plus: 2XL - 3XL Length (M): 26.5"

Two front patch pockets. Two lower pockets with double utility pockets on the right side. Utility tape in the left pocket. Single chest pocket with double stitching. Contrast bartacks. Side vents.



▲ = Contrast Color



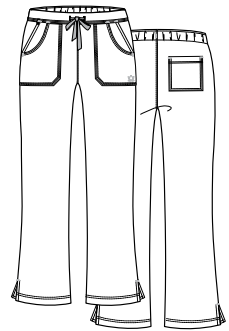
9102 MULTI-POCKET FLARE PANT

Reg: XS - XL (31")

Plus: 2XL (31")

Petite: XS - 2XL (28")

Flare leg pant with flat front and elastic back waistband. Four front pockets and single back patch pocket. Contrast drawstring and bartacks. Triple needle stitching. Side vents.



▲ = Contrast Color

55% Cotton 42% Polyester 3% Spandex

C High Comfort Stretch

BLOSSOM



RED PANDA

D High Durability

65% Polyester 35% Cotton

Love the traditional style with incredible upgrades.

- Super soft fabric
- Long-lasting and durable
- Lightweight feel
- Professional look



TOP
RED PANDA: 1706-TEL

BOTTOM
RED PANDA: 9706-TEL



TOP
RED PANDA: 1706-TRQ

BOTTOM
RED PANDA: 9706-TRQ

Classic
Meets
Adaptive



1716 V-NECK TWO POCKET TOP

Reg: XXS - XL

Plus: 2XL - 5XL Length (M): 27.75"

V-neck top. Two front patch pockets.
Double needle stitching at shoulder and pocket.
Utility tape in the left pocket.
Side vents.



65% Polyester 35% Cotton  High Durability

RED PANDA

9716 HALF ELASTIC PANT

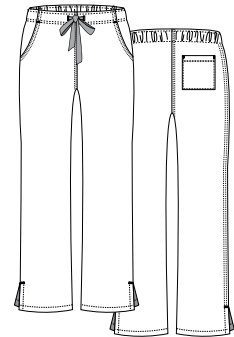
Reg: XXS - XL (30.5")

Plus: 2XL - 5XL (30.5")

Petite: XS - 3XL (28")

Tall: XS - 3XL (33")

Straight leg pant. Half elastic waistband with dyed-to-match drawstring. Two front curved pockets.
Single back patch pocket. Side vents.

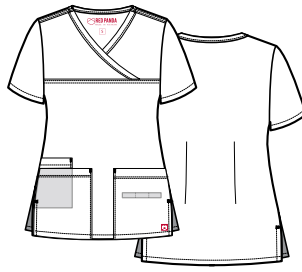


1726 CURVED MOCK WRAP TOP

Reg: XXS - XL

Plus: 2XL - 5XL Length (M): 27.75"

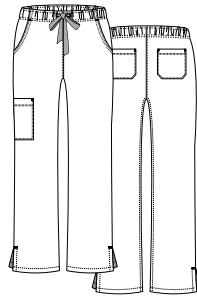
Curved mock wrap top. Front yoke with double needle stitching. Two front patch pockets. Single inner patch pocket on the right side. Utility tape in the left pocket. Side vents.

**9726 FULL ELASTIC WAISTBAND CARGO PANT**

Reg: XXS - XL (30.5") Petite: XXS - 3XL (28")

Plus: 2XL - 5XL (30.5") Tall: XS - 3XL (33")

Straight leg pant.
Full elastic waistband with dyed-to-match drawstring.
Two front curved pockets. Single cargo pocket.
Two back patch pockets. Side vents.





1706 UNISEX V-NECK TOP

Reg: XXS - XL

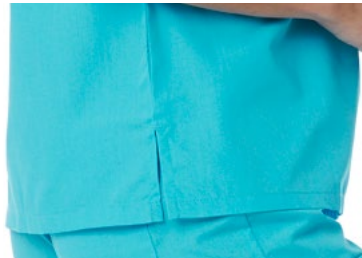
Plus: 2XL - 5XL Length (M): 27.75"

Unisex v-neck top.

Single chest pocket with a pen slot.

Decorative stitching.

Side vents.



65% Polyester 35% Cotton D High Durability

RED PANDA



9706 UNISEX BASIC PANT

Reg: XXS - XL (30.75")

Plus: 2XL - 5XL (30.75")

Petite: XXS - 2XL (28.25")

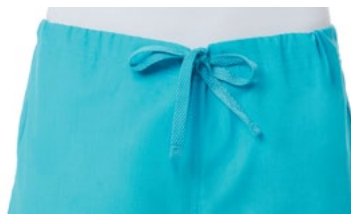
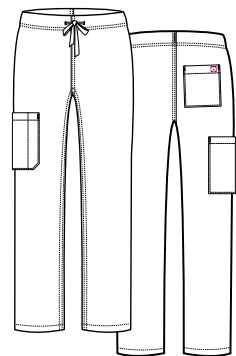
Tall: XS - XL (33.25")

Unisex straight leg pant.

Single cargo pocket with a pen slot.

Dyed-to-match drawstring.

Single back patch pocket.

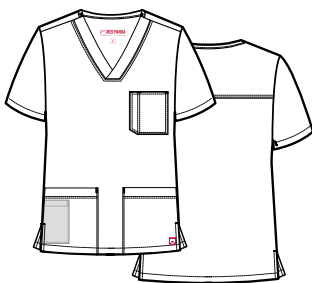


5206 MEN'S 3-POCKET V-NECK TOP

Reg: XS - XL

Plus: 2XL - 5XL Length (M): 30.75"

V-neck top. Two front patch pockets. Single hidden pocket. Single chest pocket with a pen slot. Back yoke with double needle stitching. Side vents.

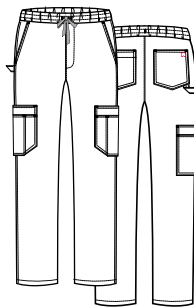


8206 MEN'S FULL ELASTIC 10-POCKET CARGO PANT

Reg: XS - XL (31") Short: XS - 4XL (28.5")

Plus: 2XL - 5XL (31") Tall: XS - 3XL (33.5")

Tapered pants with triple-stitched full elastic waistband and dyed-to-match drawstring. Two front slant pockets. Two cargo pockets with pen slots. Two back patch pockets with single large utility loop.



RED PANDA

35% Cotton

65% Polyester

High Durability

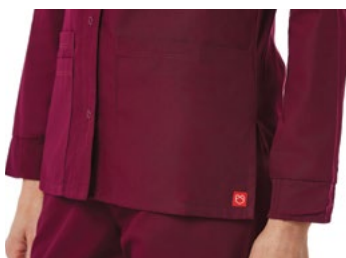


8706 WOMEN'S WARM-UP JACKET

Reg: XS - XL

Plus: 2XL - 5XL Length (M): 28.5"

Round neck long sleeve jacket with dyed-to-match snap front. Half rib trim cuff. Two front patch pockets. Two lower patch pockets. Utility tape in the left pocket. Double pocket on the right side. Side vents.



65% Polyester 35% Cotton D High Durability

RED PANDA

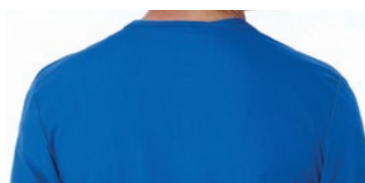


8716 UNISEX SNAP JACKET

Reg: XXS - XL (29.25")

Plus: 2XL - 5XL (29.25")

Round neck long sleeve jacket with dyed-to-match ring-snap front. Full rib trim cuff. Two front slant patch pockets. Single inner utility pocket. Utility tape in the left pocket. Side vents.



CORE

65% Polyester 35% Cotton

Maximize function everyday in comfort.

- Superior engineered poplin fabric
- Comfortable and durable
- Great value

D High Durability

1006 UNISEX V-NECK TOP

Reg: XXS - XL

Plus: 2XL - 5XL Length (M): 28.75"

Unisex v-neck top.

Single chest pocket with a pen slot.

Double stitching at shoulder and pocket.

Side vents.



9006 UNISEX SEAMLESS PANT

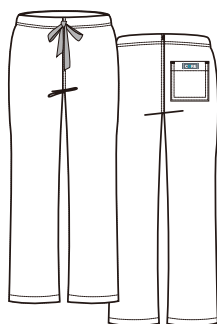
Reg: XXS - XL (31") Petite: XS - 3XL (28")

Plus: 2XL - 5XL (31") Tall: XS - 3XL (33")

Unisex seamless straight leg with drawstring waistband.

Single back pocket with double stitching and

dye-to-match drawstring.





1016 CLASSIC V-NECK TOP

Reg: XXS - XL

Plus: 2XL - 5XL Length (M): 27.75"

V-neck top. Two front patch pockets.
Single inner utility pocket on the right side.
Utility tape in the left pocket. Double stitching
at shoulder and pocket. Side vents.



65% Polyester 35% Cotton

D High Durability

CORE



9016 FULL ELASTIC BAND CARGO PANT

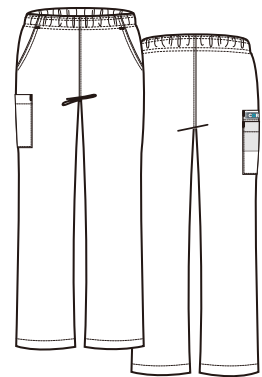
Reg: XXS - XL (31")

Plus: 2XL - 5XL (31")

Petite: XS - 3XL (28")

Tall: XS - 3XL (33")

Straight leg with full elastic waistband.
Two front slant pockets.
Single cargo pocket and inner utility pocket.



1026 CONTRAST MOCK WRAP TOP

Reg: XXS - XL

Plus: 2XL - 5XL Length (M): 26.25"

Mock wrap top. Contrast neck binding.

Two front patch pockets. Single inner utility pocket on the right side. Utility tape in the left pocket.

Side vents.



9026 CLASSIC FLARE PANT

Reg: XXS - XL (31") Petite: XS - 3XL (28")

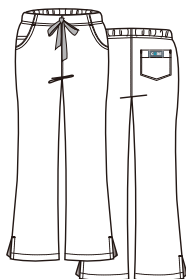
Plus: 2XL - 5XL (31") Tall: XS - 3XL (33")

Flare leg pant with flat front, elastic back waistband.

Dyed-to-match drawstring. Two front curved pockets.

Single inner utility pocket. Single back patch pocket.

Side vents.



9626 UTILITY CARGO PANT

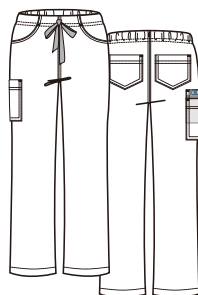
Reg: XXS - XL (31") Petite: XS - 3XL (28")

Plus: 2XL - 5XL (31") Tall: XS - 3XL (33")

Straight leg pant, flat front, elastic back waistband.

Dyed-to-match drawstring. Two front curved pockets.

Two back patch pockets. Single cargo pocket with inner utility pocket.



High Durability

65% Polyester 35% Cotton

CORE

BLAZE

100% Polyester Bonded Fleece

We created the perfect jacket for a cold day.

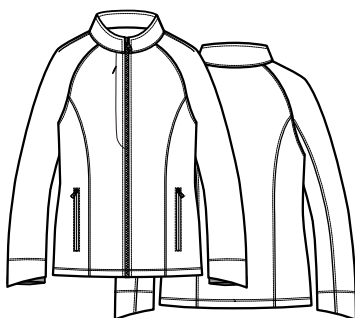
- Super soft, insulated interior
- Invisible inseam pocket
- Highly breathable fabric and lightweight
- Keeps you warm and comfy

3812 WOMEN'S WARM-UP BONDED FLEECE JACKET

Reg: XS - XL

Plus: 2XL - 3XL Length (M): 27"

Bonded fleece jacket with raglan style sleeve. Two front zipper pockets. Chest zipper pocket. Inner mesh pocket. Asymmetric sleeve hemline with internal knit fabric. Shoulder darts. Front and back vertical seams.

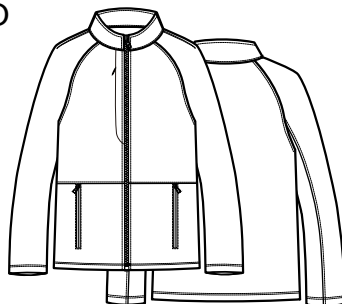


3814 MEN'S WARM-UP BONDED FLEECE JACKET

Reg: S - XL

Plus: 2XL - 3XL Length (M): 28.5"

Bonded fleece jacket with raglan style sleeve. Two front zipper pockets. Chest zipper pocket. Shoulder darts and waist seam.



BLK



BLAZE

8801 3/4 SLEEVE ZIP LAB JACKET

Reg: XXS - XL

Plus: 2XL - 4XL Length (M): 28"

Fashion collar. Two way front zipper. Side vents.
Front princess line. Two front pockets with inner pockets.
3/4 sleeve with side vent. Back darts with buttoned waist belt.



8802 HALF SLEEVE CONTRAST TRIM JACKET

Reg: XXS - XL

Plus: 2XL - 4XL Length (M): 29"

Fitted collar. Two way front zipper. Side vents.
Front and back princess line. Two front patch pockets.
Half sleeve with side vent. Waist belts on side panel.
Fancy buttons on sleeve and waist belt.



8803 3/4 SLEEVE LAB JACKET

Reg: XXS - XL

Plus: 2XL - 3XL Length (M): 29"

Rounded neckline and 3/4 sleeve with side vent.
Two way front zipper. Two front curved pockets with utility pocket. Back waist belt. Side vents.



LAB COATS

65% Polyester 35% Cotton

A LIGHTER coat to suit you.

D High Durability

- Modern style
- Lightweight
- Large patch pockets for mini tablet
- Durable with a slightly thicker denim feel

7116 RED PANDA - WOMEN'S CONSULTATION LAB COAT

Reg: XS - XL

Plus: 2XL - 3XL

Length (M): 29"

Notched collar consultation coat with dyed-to-match button front. Chest pocket with a pen slot. Two large patch pockets for mini tablet. Back darts and center vent.



WHT

7126 RED PANDA - WOMEN'S 3/4 SLEEVE LAB COAT

Reg: XS - XL

Plus: 2XL - 3XL

Length (M): 29"

Notched collar consultation coat with dyed-to-match button front. Two large patch pockets for mini tablet. Back waist belt with darts. Sleeve cuffs with back vents. Center back vent.



7156 RED PANDA - WOMEN'S LONG LAB COAT

Reg: XS - XL

Plus: 2XL - 3XL

Length (M): 37.5"

Notched collar lab coat with dyed-to-match button front. Two large patch pockets for mini tablet. Chest pocket with a pen slot. Back waist belt with dyed-to-match buttons. Back yoke. Side access slits. Center and side vents.



WHT



7216 RED PANDA - MEN'S CONSULTATION LAB COAT

Reg: XS - XL

Plus: 2XL - 5XL

Length (M): 30.5"

Notched collar consultation coat with dyed-to-match button front. Chest pocket with a pen slot. Two large patch pockets for mini tablet. Back yoke. Center back vent.



WHT



7256 RED PANDA - MEN'S LONG LAB COAT

Reg: XS - XL

Plus: 2XL - 5XL

Length (M): 42.5"

Notched collar lab coat with dyed-to-match button front. Two large patch pockets for mini tablet. Chest pocket with a pen slot. Back waist belt with dyed-to-match buttons. Back yoke. Side access slits. Center and side vents.



WHT



RED PANDA - LAB COATS

65% Polyester

35% Cotton

D High Durability



7151 CORE - WOMEN'S CONSULTATION LAB COAT

Reg: XS - XL

Plus: 2XL - 3XL Length (M): 30.5"

Notched collar lab coat with dyed-to-match button front. Chest pocket with a pen slot. Two front pockets. Single inner utility pocket. Inner utility tape in the left pocket. Back waist belt with dyed-to-match buttons.



WHT

65% Polyester 35% Cotton

D High Durability

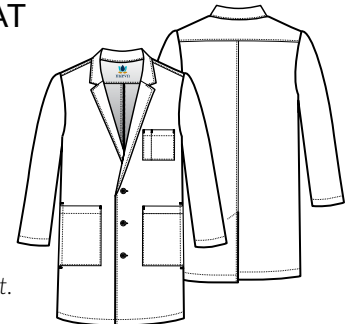


7551 CORE - UNISEX LAB COAT

Reg: XS - XL

Plus: 2XL - 5XL Length (M): 35.5"

Unisex notched collar lab coat with dyed-to-match button front. Chest pocket with a pen slot. Two front patch pockets and inner patch pocket. Side access slits. Back center vent.



CORE - LAB COATS

Prints

92% Polyester 8% Spandex

Brighten your day with these creative prints.

- Fun designs with personality
- Beautiful array of colors
- Soft and wrinkle resistant
- Professional style

1767 V-NECK PRINT TOP

Reg: XS - XL

Plus: 2XL - 3XL

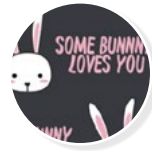
Plus: 4XL - 5XL - Selected Items

92% Polyester 8% Spandex

NEW 2021 SPRING



EEH
Easter Egg Hunt



SBU
Some Bunny Loves You



BEM
Bee Mine



PUG
For the Love of Pug



MOB
Monkey Business



SSF
Sunset Flowers



PAW
Paw-some
5XL



HGO
Hello Gorgeous



GAS
Garden Sketches



BLD
Blossom Dreams
5XL



FSS
Forever Seashells



ELP
Ellipse
5XL



EDG
Edgeline
5XL

2020 SPRING



BCB Blooming Cherry Blossom



CUC Cup O' Cat



SPB Spring Bouquet



BUC Bunny Cakes



CIL Cat-In-Love



COD Coffee Date

2020 SPRING



DRC

Doctor Cat



FAL

Fabullama



SBR

Sir Brush-A-Lot



SPO

Spaced Out



TTD

Tic Tac Donut



2020 SUMMER

DOW

Donut Worry, Be Happy



AVO

Avocat



BEN

Beary Nurse



TRD

Tropical Daze



SST

Star Spangled Treats



HIR

Hibiscus Roar



BAT

Baby Trunks

1767 V-NECK PRINT TOP 92% Polyester 8% Spandex

PRINTS

2020 SUMMER



SAD

Shark A Doo



NUB

Nurse Beat



ONM

One In A Melon

2020 FALL



PKL

Pink Ladies



DCT

Days of the Cats



ACM

Avo-Cat-Mas



UPS

Uni-Pigs in Space



AWU

All Wrapped Up



FLY

Florever Yours



PPD

Playful Puddles



TAL

Thanks-A-Latte



HLD

Happy-Llama-Days



SHH

Slow Ho Ho



SWD

Sweet Dreams



OFF

Out of Planet



ESF

Easter Friends

2019 SPRING

2019 SUMMER



SUF Summer Flowers



DIL Dino Land



FFN Field of Flowers



JUP Jungle Party



TOP Toucan Paradise



LIS Liberty and Sam



2019 FALL



COL Coffee Love



COP Costume Party



FON Foxy Night



MFT Mermaids and Fairy Tales



NIG Night Garden



SPT Spooky Treats

2019 WINTER



CMC Color Me Christmas



DTD Dashing Through Donuts



HCH Have a Cocoa Holiday



PIM Panda in Motion

1767 V-NECK PRINT TOP 92% Polyester 8% Spandex

PRINTS

1747 CURVED V-NECK PRINT TOP

Reg: XS - XL
Plus: 2XL - 3XL

Length (M): 27.25"

96% Polyester 4% Spandex

2020 SPRING



BBQ

Beautiful Bouquet



BMW

Blooming Wings



LVH

Loving Hearts



OTB

Out of the Blue



2020 SUMMER

FPT

Flower Patch



JLV

Jumbo Love



CAB

Cute As A Button



WAH

What A Hoot

2019 SPRING



BBL

Blissful Bloom



CMH

Cross My Heart



DAC

Dots and Circles

2019 WINTER



BHE

Blushing Hearts



BLB

Blooming in Blue



SPO

Spot On



WIB

Wings In Bloom



PDN

Pokie Dot

2018 FALL

1747 CURVED V-NECK PRINT TOP 96% Polyester 4% Spandex

PRINTS

READYGO

CLINICAL BACKPACK

A new multi-functional accessory that you can carry like a tote or a backpack. It is the new carry-all for your daily activities.

- A variety of pockets and compartments for storage
- Lightweight and durable
- Easy-to-clean surface
- 100% vegan leather trim
- Detachable backpack straps



NB003 READYGO CLINICAL BACKPACK

Height: 16" | Width: 12"

Depth: 7.5"

Front Pocket Height: 10"

Side Pocket Height: 7"

Exterior Zipper Pocket: 9" x 11.5"

Lightweight, durable, water-resistant polyester fabric.

Easy-to-clean surface. Built-in padded shoulder straps.

Padded tech pocket that holds a 15" laptop.

Padded detachable backpack straps can be tucked inside the back slip pocket.

Slip and mesh pockets in exterior compartment.

Interior has a zipper pocket, a mesh pocket and two elastic pockets.

100% vegan leather trim.

ACCESSORIES



BLACK
NB003-BLK



HEATHER GREY
NB003-HGR



NAVY
NB003-NVY

NB005 / NB006 READYGO CLINICAL MINI

Height: 13" | Width: 10.5" | Depth: 5.5"

Front Pocket Height: 8"

Side Pocket Height: 7"

Exterior Zipper Pocket: 10" x 8"

Lightweight, durable, water-resistant polyester fabric.

Easy-to-clean surface.

Padded backpack straps can be tucked inside the back slip pocket.

Large front zipper pocket with extra built-in interior pockets.

Interior has a zipper pocket, a mesh pocket and two elastic pockets.

100% vegan leather trim.

Interior mesh pocket for tech devices: 9.5" x 10"



GREY
NB005-GRY



BLACK
NB006-BLK



BERRY
NB006-BRY



PINK
NB006-PNK



NB007 READYGO MINI BACKPACK

Height: 14" | Width: 10" | Depth: 7"

Front Pocket Height: 6.8" | Side Pocket Height: 6.5"

Tech Pocket: 10" x 7.5" | For devices up to 10" x 14"

Lightweight, durable, water-resistant polyester fabric.

Easy-to-clean surface.

Large main zipper compartment for easy and wide access.

Large front zipper pocket with extra built-in interior pockets.

Two side pockets with velcro closure adjustable pocket size.

Interior has a zipper pocket, a mesh pocket and two elastic pockets.

Webbing top handle with snap strap for closure.

100% vegan leather trim.

Interior mesh pocket for tech devices: 8" x 9"



POLKA DOT
NB007-BLK



Single Pocket
on Each Side

Single Mesh Pocket
with Zipper Opening

Webbing
Handle

Large Front
Zipper Pocket

Clear ID
Pocket

Two Slip
Pockets



Large
Mesh Pocket

Wide
Access

Two Slip
Pockets

Interior
Zipper Pocket

NB011 READYGO CLINICAL CLUTCH

Height: 6.75" | Width: 9.5" | Depth: 2.5"

Handle Drop: 1.5"

Crossbody Strap Drop: Long 22.5", Short: 12.5"

Lightweight, durable, water-resistant polyester fabric.

Easy-to-clean surface.

Detachable crossbody strap with metal clips.

Back zipper pocket.

Can be carried as a clutch or crossbody.

Wide access.

Interior clear plastic slider pocket.

Four elastic bands to hold tools.

100% vegan leather trim.



Clear Plastic
Slider Pocket

Utility Tape

Mesh
Pocket



BLACK
NB011-BLK



BERRY
NB011-BRY



CHEETAH
NB011-CHT



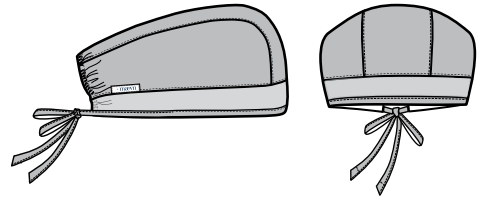
PINK
NB011-PNK



NC010 UNISEX SCRUB CAP

One Size Fits All.

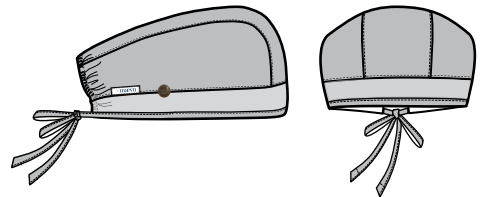
Cotton rich, stretch fabric.
Ultra soft. Cool feeling. Lightweight.
Features a terry-cloth sweatband.
Back elastic. Adjustable, tie-back closure.



NC015 UNISEX SCRUB CAP WITH BUTTONS

One Size Fits All.

Cotton rich, stretch fabric. Ultra soft.
Cool feeling. Lightweight.
Features a terry-cloth sweatband.
Back elastic. Adjustable, tie-back closure.
Single button on each side.



EcoFlex Fabric



Impulse Fabric



P = Primaflex Fabric



B = Blossom Fabric

NC020 LADIES BOUFFANT SCRUB CAP

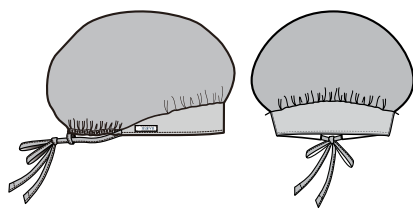
One Size Fits All.

Cotton rich, stretch fabric.

Ultra soft. Cool feeling. Lightweight.

Features a terry-cloth sweatband.

Back elastic. Adjustable, tie-back closure.



EcoFlex Fabric



Impulse Fabric



P = Primaflex Fabric



B = Blossom Fabric

CM010 REUSABLE CLOTH FACE MASK



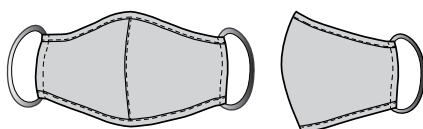
Antimicrobial Treatment

Available Sizes: SM, MD, LG

Two layers of soft, comfortable fabric.

With Agion antimicrobial treatment.

Washable, reusable and eco-friendly.





MA010 MASK ADAPTOR

One Size Fits All.

Easy to use.

Washable, stretchy elastic bands.

Two buttons to secure mask.

Helps prevent mask cutting into the back of ears.



MA020-BLK MASK EXTENDER

One Size Fits All.

Adjustable cord-lock.

Can be worn secure across back of the head as ear saver.

Can be worn loose around back of the neck as a mask holder.

Comfortable elastic cord.

Easy clip plastic clasps.

Unisex.



P High Performance Collections

EON

59% Polyester 22% Rayon 19% Elastrell-P
MESH: 83% Polyester 17% Spandex

COOLMAX®

LYCRA

UPF⁴⁰⁺



1708

V-NECK
POCKET TOP

Reg: XXS - XL
Plus: 2XL - 3XL

Length (M):
27.75"

7308

FULL ELASTIC ZIPPER
POCKET CARGO PANT

Reg: XXS - XL (30.5")
Plus: 2XL - 3XL (30.5")
Petite: XXS - 3XL (28")
Tall: XS - 3XL (33")

8708

SPORTY MESH
PANEL JACKET

Reg: XXS - XL
Plus: 2XL - 3XL

Length (M):
27"



5308

MEN'S MESH PANEL
3-POCKET V-NECK TOP

Reg: XXS - XL
Plus: 2XL - 3XL

Length (M):
30.75"

8308

MEN'S HALF ELASTIC
8-POCKET CARGO PANT

Reg: XXS - XL (31")
Plus: 2XL - 3XL (31")
Short: XXS - 3XL (28.5")
Tall: XS - 3XL (33.5")

5208

MEN'S SINGLE CHEST
POCKET V-NECK TOP

Reg: XXS - XL
Plus: 2XL - 3XL

Length (M):
30.75"



GROUP SALES

P High Performance Collections

MATRIX PRO

74% Polyester 20% Rayon 6% Spandex



3901 CONTRAST LAYERED V-NECK TOP

Reg: XXS - XL Length (M): 27.25"
Plus: 2XL - 3XL

6901 CONTRAST YOGA WAISTBAND PANT

Reg: XXS - XL (31")
Plus: 2XL - 3XL (31")
Petite: XS - 2XL (28.5")
Tall: S - XL (33.5")



7091 COMFY WARM-UP JACKET

Reg: XS - XL Length (M): 27.25"
Plus: 2XL - 3XL



5901 MEN'S CONTRAST PIPING V-NECK TOP

Reg: XS - XL Length (M): 29.25"
Plus: 2XL - 3XL

8901 MEN'S HALF ELASTIC WAISTBAND CARGO PANT

Reg: XS - XL (31")
Plus: 2XL - 3XL (31")
Short: XS - 2XL (28.5")

GROUP SALES

C High Comfort Stretch Collections

MATRIX

65% Polyester 32% Rayon 3% Spandex



3500 UNISEX V-NECK TOP

Reg: XS - XL Length (M): 28.75"
Plus: 2XL - 5XL



3501 DOUBLE V-NECK TOP

Reg: XXS - XL Length (M): 27.25"
Plus: 2XL - 3XL Length (M): 27.25"
Short: XS - XL Length (M): 25.75"



5502 MEN'S 3-POCKET V-NECK TOP

Reg: XS - XL Length (M): 29.75"
Plus: 2XL - 3XL

6500 UNISEX BASIC PANT

Reg: XS - XL (31")
Plus: 2XL - 5XL (31")
Short: XS - 2XL (28.5")

6501 FULL ELASTIC WAIST CARGO PANT

Reg: XXS - XL (31")
Plus: 2XL - 3XL (31")
Petite: XS - 2XL (28.5")
Tall: SM - XL (33.5")

8502 MEN'S HALF ELASTIC WAISTBAND CARGO PANT

Reg: XXS - XL (31")
Plus: 2XL - 3XL (31")
Short: XS - 2XL (28.5")

MATRIX IMPULSE

92% Polyester 8% Spandex



7510 WOMEN'S ROUND NECK SNAP JACKET

Reg: XS - XL Length (M): 27.75"
Plus: 2XL - 3XL



4511 WOMEN'S CURVED V-NECK TOP

Reg: XS - XL Length (M): 27.25"
Plus: 2XL - 3XL



8510 FULL ELASTIC WAISTBAND PANT

Reg: XS - XL (30.5")
Plus: 2XL - 3XL (30.5")
Petite: XS - 2XL (28")

C High Comfort Stretch Collections

BLOSSOM

55% Cotton 42% Polyester 3% Spandex



1102 MOCK WRAP TOP

Reg: XS - XL Length (M):
Plus: 2XL - 5XL 27.5"

9202 UTILITY CARGO PANT

Reg: XS - XL (30.5")
Plus: 2XL - 5XL (30.5")
Petite: XS - 3XL (28")
Tall: XS - 3XL (33.5")

1202 3-POCKET V-NECK TOP

Reg: XS - XL Length (M):
Plus: 2XL - 3XL 26.5"

9102 MULTI-POCKET FLARE PANT

Reg: XS - XL (31")
Plus: 2XL (31")
Petite: XS - 2XL (28")



D High Durability Collections

RED PANDA

65% Polyester 35% Cotton



1716 V-NECK TWO POCKET TOP

Reg: XXS - XL Length (M):
Plus: 2XL - 5XL 27.75"

9716 HALF ELASTIC PANT

Reg: XXS - XL (30.5") Petite: XS - 3XL (28")
Plus: 2XL - 5XL (30.5") Tall: XS - 3XL (33")

1726 CURVED MOCK WRAP TOP

Reg: XXS - XL Length (M):
Plus: 2XL - 5XL 27.75"

9726 FULL ELASTIC WAISTBAND CARGO PANT

Reg: XXS - XL (30.5") Petite: XS - 3XL (28")
Plus: 2XL - 5XL (30.5") Tall: XS - 3XL (33")



D High Durability Collections

RED PANDA

65% Polyester 35% Cotton



8716

UNISEX SNAP
JACKET

Reg: XXS - XL (29.25")
Plus: 2XL - 5XL (29.25")

1706

UNISEX
V-NECK TOP

Reg: XXS - XL Length (M):
Plus: 2XL - 5XL 27.75"

9706

UNISEX
BASIC PANT

Reg: XXS - XL (30.75")
Plus: 2XL - 5XL (30.75")
Petite: XXS - 2XL (28.25")
Tall: XS - XL (33.25")



5206

MEN'S 3-POCKET
V-NECK TOP

Reg: XS - XL Length (M):
Plus: 2XL - 5XL 30.75"

8206

MEN'S FULL ELASTIC
10-POCKET
CARGO PANT

Reg: XS - XL (31")
Plus: 2XL - 5XL (31")
Short: XS - 4XL (28.5")
Tall: XS - 3XL (33.5")

8706

WOMEN'S
WARM-UP JACKET

Reg: XS - XL Length (M):
Plus: 2XL - 5XL 28.5"



GROUP SALES

D High Durability Collections

CORE

65% Polyester 35% Cotton



1006

UNISEX
V-NECK TOP

Reg: XXS - XL
Plus: 2XL - 5XL

Length (M):
28.75"

9006

UNISEX
SEAMLESS PANT

Reg: XXS - XL (31")
Plus: 2XL - 5XL (31")
Petite: XS - 3XL (28")
Tall: XS - 3XL (33")

1016

CLASSIC
V-NECK TOP

Reg: XXS - XL
Plus: 2XL - 5XL

Length (M):
27.75"

9016

FULL ELASTIC BAND
CARGO PANT

Reg: XXS - XL (31")
Plus: 2XL - 5XL (31")
Petite: XS - 3XL (28")
Tall: XS - 3XL (33")



1026

CONTRAST
MOCK WRAP TOP

Reg: XXS - XL
Plus: 2XL - 5XL

Length (M):
26.25"

9026

CLASSIC
FLARE PANT

Reg: XXS - XL (31")
Plus: 2XL - 5XL (31")
Petite: XS - 3XL (28")
Tall: XS - 3XL (33")

9626

UTILITY
CARGO PANT

Reg: XXS - XL (31")
Plus: 2XL - 5XL (31")
Petite: XS - 3XL (28")
Tall: XS - 3XL (33")



GROUP SALES

COLOR CODES

▲ = Contrast Color

 AGR - Apple Green	 HGR - Heather Grey	 PNV - Pure Navy
 ALM - Acid Lime	 HNV - Heather Navy	 PPC - Pink Peacock
 APL - Apple	 HPK - Hot Pink	 PPK - Passion Pink
 AQU - Aquamarine	 HTR - Hunter Green	 PPL - Purple
 ARB - Aruba Blue	 IBL - Imperial Blue	 RBR - Raspberry Rose
 AZL - Azure	 IDG - Indigo Blue	 RED - Red
 BEM- Bee Mine	 IFB - Infinite Blue	 RNV - Real Navy
 BKM - Black with Pewter	 KHI - Khaki	 RPK - Rose Pink
 BLK - Black	 LBL - Lake Blue	 RPW - Real Pewter
 BLP - Blush Pink	 LCO - Living Coral	 RSB - Raspberry
 BPK - Blush Pink	 LGN - Lush Green	 RTL - Real Teal
 CBL - Ceil Blue	 LIM - Lime	 RYL - Royal Blue
 CHC - Chocolate	 LVR - Lavender	 SBP - Strawberry Pink
 CHR - Charcoal	 MBL - Malibu Blue (Core)	 SBU - Some Bunny Loves You
 CPK - Candy Pink	 MBL - Maui Blue (EON)	 SCB - Scuba Blue
 CRB - Caribbean Blue	 MNT - Mint	 SGN - Surgical Green/Sea Green
 CRM - Crimson	 MOB - Monkey Business	 SKY - Sky Blue
 CRD - Cherry Red	 MSV - Metallic Silver	 TBL- Teal Blue
 CYB - Cyan Blue	 NAVY - Navy	 TEL - Teal
 DHA - Dahlia	 NYM - Navy with Ceil Blue	 TNY - True Navy
 DCR - Deep Coral	 OLV - Olive	 TPL - True Purple
 EGP - Eggplant	 ORD - Orchid	 TRQ - Turquoise
 FSM - Fresh Salmon	 PAW - Paw-some	 UVI - Ultra Violet
 GBL - Galaxy Blue	 PCB - Pacific Blue	 WHT - White
 GRP - Grape	 PEW - Pewter	 WIN - Wine
 HGO - Hello Gorgeous	 PLM - Plum	 WMN - Watermelon

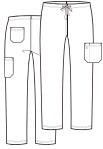
COLOR GUIDE

UNISEX STYLES



3500

Reg: XS - XL
Plus: 2XL - 5XL



6500

Reg: XS - XL
Plus: 2XL - 5XL
Short: XS - 2XL



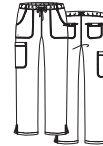
▲ = Contrast Color

WOMEN'S STYLES



3501

Reg: XXS - XL
Plus: 2XL - 3XL
Short: XS - XL



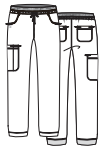
6501

Reg: XXS - XL
Plus: 2XL - 3XL
Petite: XS - 2XL
Tall: SM - XL



3701

Reg: XXS - XL
Plus: 2XL - 3XL



6701

Reg: XXS - XL
Plus: 2XL - 3XL
Petite: XS - 2XL
Tall: SM - XL



3502

Reg: XXS - XL
Plus: 2XL - 3XL



7701

Reg: XS - XL
Plus: 2XL - 3XL

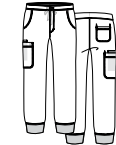


MEN'S STYLES



5501

Reg: XS - XL
Plus: 2XL - 3XL



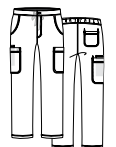
8501

Reg: XS - XL
Plus: 2XL - 3XL
Short: XS - 2XL



5502

Reg: XS - XL
Plus: 2XL - 3XL



8502

Reg: XXS - XL
Plus: 2XL - 3XL
Short: XS - 2XL



65% Polyester 32% Rayon 3% Spandex

MATRIX

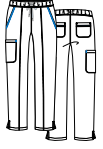
WOMEN'S STYLES

▲ = Contrast Color



4510

Reg: XS - XL
Plus: 2XL - 3XL



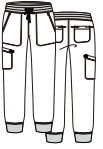
8510

Reg: XS - XL
Plus: 2XL - 3XL
Petite: XS - 2XL



4520

Reg: XS - XL
Plus: 2XL - 3XL



8520

Reg: XS - XL
Plus: 2XL - 3XL
Petite: XS - 2XL
Tall: XS - 2XL



4511

Reg: XS - XL
Plus: 2XL - 3XL



4521

Reg: XS - XL
Plus: 2XL - 3XL



4530

Reg: XS - XL
Plus: 2XL - 3XL



7510

Reg: XS - XL
Plus: 2XL - 3XL

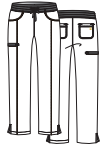


WOMEN'S STYLES



3901

Reg: XXS - XL
Plus: 2XL - 3XL



6901

Reg: XXS - XL
Plus: 2XL - 3XL
Petite: XS - 2XL
Tall: S - XL



7091

Reg: XS - XL
Plus: 2XL - 3XL

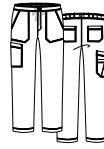


MEN'S STYLES



5901

Reg: XS - XL
Plus: 2XL - 3XL



8901

Reg: XS - XL
Plus: 2XL - 3XL
Short: XS - 2XL

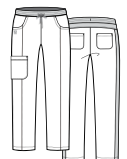


WOMEN'S STYLES



1768

Reg: XS - 1XL
Plus: 2XL - 3XL



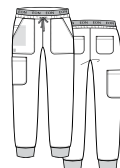
7368

Reg: XS - 1XL
Plus: 2XL - 3XL
Petite: XS - 2XL



1778

Reg: XS - 1XL
Plus: 2XL - 3XL



7378

Reg: XS - 1XL
Plus: 2XL - 3XL
Petite: XS - 2XL



74% Polyester 20% Rayon 6% Spandex

59% Polyester 22% Rayon 19% Elastell-P

92% Polyester 8% Spandex

MATRIX IMPULSE

MATRIX PRO

EON SPORT

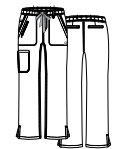
WOMEN'S STYLES



1708

Reg: XXS - XL
Plus: 2XL - 3XL

CBL MBL RYL GBL TNY TBL CRB SKY HTR LVR GRP EGP WIN RED SBP KHI PEW CHR BLK WHT



7308

Reg: XXS - XL
Plus: 2XL - 3XL
Petite: XXS - 3XL
Tall: XS - 3XL

CBL MBL RYL GBL TNY TBL CRB SKY HTR LVR GRP EGP WIN RED SBP KHI PEW CHR BLK WHT



1718

Reg: XXS - XL
Plus: 2XL - 3XL

CBL RYL GBL TNY LVR EGP WIN PEW BLK



7318

Reg: XXS - XL
Plus: 2XL - 3XL
Petite: XXS - 3XL
Tall: XS - 3XL

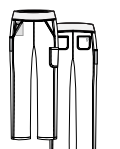
CBL RYL GBL TNY LVR EGP WIN PEW BLK



1738

Reg: XXS - XL
Plus: 2XL - 3XL

CBL RYL GBL TNY TBL SKY HTR LVR CRD EGP WIN SBP PEW BLK WHT



7338

Reg: XXS - XL
Plus: 2XL - 3XL
Petite: XXS - 3XL
Tall: XS - 3XL

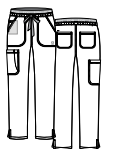
CBL RYL GBL TNY TBL SKY HTR LVR CRD EGP WIN SBP PEW BLK WHT



1748

Reg: XXS - XL
Plus: 2XL - 3XL

CBL RYL GBL TNY TBL SKY HTR LVR EGP WIN SBP PEW BLK WHT



7348

Reg: XXS - XL
Plus: 2XL - 3XL
Petite: XXS - 3XL
Tall: XS - 3XL

CBL RYL GBL TNY TBL SKY HTR LVR EGP WIN SBP PEW BLK WHT



8708

Reg: XXS - XL
Plus: 2XL - 3XL

CBL TNY WIN PEW BLK WHT



8728

Reg: XXS - XL
Plus: 2XL - 3XL

CBL TNY BLK WHT

MEN'S STYLES



5208

Reg: XXS - XL
Plus: 2XL - 3XL

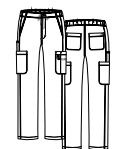
CBL RYL TNY PEW BLK



5308

Reg: XXS - XL
Plus: 2XL - 3XL

CBL RYL TNY CRB HTR WIN KHI PEW CHR BLK



8308

Reg: XXS - XL
Plus: 2XL - 3XL
Short: XXS - 3XL
Tall: XS - 3XL

CBL RYL TNY CRB HTR WIN KHI PEW CHR BLK

59% Polyester 22% Rayon 19% Elastereil-P
Mesh: 83% Polyester 17% Spandex

COOLMAX

LYCA

UPF 40+

EON



90% Polyester 10% Lycra

**6909**Reg: XXS - XL
Plus: 2XL - 3XL

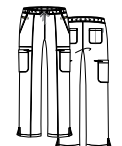
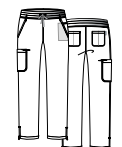
60% Rayon 35% Polyester 5% Spandex

**6709**Reg: XS - XL
Plus: 2XL - 3XL

80% Nylon 20% Spandex

**6809**Reg: XS - XL
Plus: 2XL - 3XL

WOMEN'S STYLES

**1901**Reg: XXS - XL
Plus: 2XL - 3XL**7901**Reg: XXS - XL
Plus: 2XL - 3XL
Petite: XS - 3XL
Tall: XS - 2XL**1902**Reg: XXS - XL
Plus: 2XL - 3XL**7902**Reg: XXS - XL
Plus: 2XL - 3XL
Petite: XS - 3XL
Tall: XS - 2XL

WOMEN'S STYLES

= Contrast Color

**1722**Reg: XS - XL
Plus: 2XL - 3XL**7322**Reg: XS - XL
Plus: 2XL - 3XL
Petite: XS - 3XL**8702**Reg: XS - XL
Plus: 2XL

96% Polyester 4% Spandex

52% Cotton 35% Polyester 13% Elastell-P

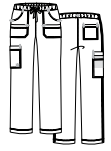
WOMEN'S STYLES

▲ = Contrast Color



1102

Reg: XS - XL
Plus: 2XL - 5XL



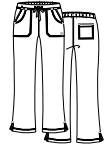
9202

Reg: XS - XL
Plus: 2XL - 5XL
Petite: XS - 3XL
Tall: XS - 3XL



1202

Reg: XS - XL
Plus: 2XL - 3XL



9102

Reg: XS - XL
Plus: 2XL
Petite: XS - 2XL

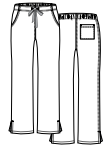


WOMEN'S STYLES



1716

Reg: XXS - XL
Plus: 2XL - 5XL



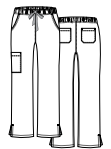
9716

Reg: XXS - XL
Plus: 2XL - 5XL
Petite: XS - 3XL
Tall: XS - 3XL



1726

Reg: XXS - XL
Plus: 2XL - 5XL



9726

Reg: XXS - XL
Plus: 2XL - 5XL
Petite: XS - 3XL
Tall: XS - 3XL



8706

Reg: XS - XL
Plus: 2XL - 5XL

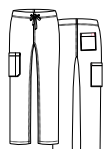


UNISEX STYLES



1706

Reg: XXS - XL
Plus: 2XL - 5XL



9706

Reg: XXS - XL
Plus: 2XL - 5XL
Petite: XXS - 2XL
Tall: XS - XL



8716

Reg: XXS - XL
Plus: 2XL - 5XL



55% Cotton 42% Polyester 3% Spandex

BLOSSOM

65% Polyester 35% Cotton

RED PANDA

RED PANDA

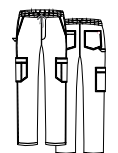
65% Polyester 35% Cotton

MEN'S STYLES



5206

Reg: XS - XL
Plus: 2XL - 5XL



8206

Reg: XS - XL
Plus: 2XL - 5XL
Short: XS - 4XL
Tall: XS - 3XL



WOMEN'S STYLES

▲ = Contrast Color



1016

Reg: XXS - XL
Plus: 2XL - 5XL



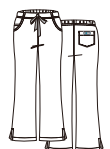
9016

Reg: XXS - XL
Plus: 2XL - 5XL
Petite: XS - 3XL
Tall: XS - 3XL



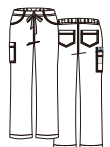
1026

Reg: XXS - XL
Plus: 2XL - 5XL



9026

Reg: XXS - XL
Plus: 2XL - 5XL
Petite: XS - 3XL
Tall: XS - 3XL



9626

Reg: XXS - XL
Plus: 2XL - 5XL
Petite: XS - 3XL
Tall: XS - 3XL

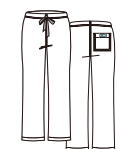


UNISEX STYLES



1006

Reg: XXS - XL
Plus: 2XL - 5XL



9006

Reg: XXS - XL
Plus: 2XL - 5XL
Petite: XS - 3XL
Tall: XS - 3XL



WOMEN'S STYLES

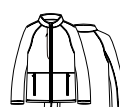


3812

Reg: XS - XL
Plus: 2XL - 3XL



MEN'S STYLES



3814

Reg: S - XL
Plus: 2XL - 3XL



CORE

65% Polyester 35% Cotton

BLAZE

100% Polyester Bonded Fleece

WOMEN'S STYLES

▲ = Contrast Color



8801

Reg: XXS - XL
Plus: 2XL - 4XL



8802

Reg: XXS - XL
Plus: 2XL - 4XL



8803

Reg: XXS - XL
Plus: 2XL - 3XL



WOMEN'S STYLES

MEN'S STYLES

WOMEN'S

UNISEX



7116

Reg: XS - XL
Plus: 2XL - 3XL



7126

Reg: XS - XL
Plus: 2XL - 3XL



7156

Reg: XS - XL
Plus: 2XL - 3XL



7216

Reg: XS - XL
Plus: 2XL - 5XL



7256

Reg: XS - XL
Plus: 2XL - 5XL



7151

Reg: XS - XL
Plus: 2XL - 3XL



7551

Reg: XS - XL
Plus: 2XL - 5XL

WHT

RED PANDA

CORE



Black
NB003-BLK



Heather Grey
NB003-HGR



Navy
NB003-NVD



Grey
NB005-GRY



Black
NB006-BLK



Berry
NB006-BRY



Pink
NB006-PNK



Polka Dot
NB007-BLK



Black
NB011-BLK



Berry
NB011-BRY

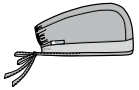


Cheetah
NB011-CHT

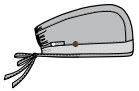


Pink
NB011-PNK

SCRUB CAPS



NC010



NC015



EcoFlex Fabric

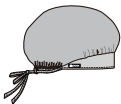


Impulse Fabric



P = Primaflex Fabric

B = Blossom Fabric



NC020



EcoFlex Fabric



Impulse Fabric



P = Primaflex Fabric

B = Blossom Fabric

FACE MASKS, ADAPTORS, EXTENDER



CM010

agion
Antimicrobial
Treatment



MA010



MA020-BLK



96% Polyester 4% Spandex

65% Polyester 35% Cotton

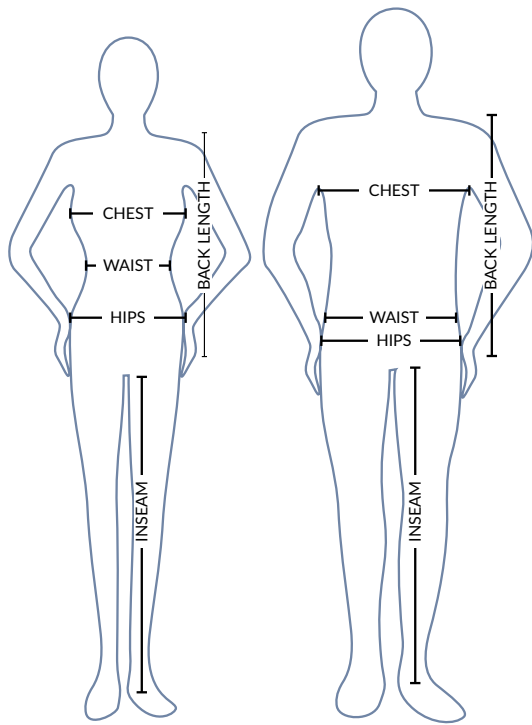
SMART

LAB COATS

READYGO

ACCESSORIES

SIZING GUIDE



CHEST

With arms relaxed at your sides, measure the fullest part of the chest.

WAIST

Measure under the natural waistline, loosely holding the tape measure.

HIPS

Standing with feet together, measure around the fullest part of the hips.

INSEAM

Select a pair of your best fitting pants of a similar material. Measure along the inside of the leg, from just below the crotch to the bottom of the pant.

LENGTH

We recommend petite for women up to 5'2", regular length for up to 5'6", and tall length for 5'7" and above.

WOMEN'S FIT	XXS	XS	S	M	L	XL	2XL	3XL	4XL	5XL
READY-TO-WEAR	0	2-4	6-8	10-12	14-16	18-20	22-24	26-28	30-32	34-36
CHEST/BUST	30-31	32-33	34-35	36-38	39-42	43-46	47-50	51-54	55-58	59-62
WAIST	23-24	25-26	27-28	29-31	32-35	36-39	40-43	44-47	48-51	52-55
HIP	32-33	34-35	36-37	38-40	41-44	45-48	49-52	53-56	57-61	62-66

MEN'S FIT	XXS	XS	S	M	L	XL	2XL	3XL	4XL	5XL
CHEST	31-32	33-35	36-38	39-41	42-45	46-49	50-53	54-57	58-61	62-65
WAIST	22-24	25-27	28-30	31-33	34-37	38-41	42-45	46-49	50-53	54-57
HIP	31-32	33-35	36-38	39-41	42-45	46-49	50-53	54-57	58-61	62-65

UNISEX FIT	XXS	XS	S	M	L	XL	2XL	3XL	4XL	5XL
CHEST/BUST	29-31	32-34	35-37	38-40	41-44	45-48	49-52	53-56	57-60	61-64
WAIST	23-24	25-26	27-29	31-32	33-36	37-40	41-44	45-48	49-52	53-57
HIP	30-32	33-35	36-38	39-41	42-45	46-49	50-53	54-57	58-61	62-65

PLACING AN ORDER

There are **FIVE WAYS** for our retail partners to place orders:



Call us at **800-993-1841**



Fax us at **972-241-1184**



Send orders via **EDI through The Uniform Solution**



Order online at **<https://b2b.MaevnUniforms.com>**



Email **orders@MaevnUniforms.com**

RETURN AUTHORIZATION

All return requests must be approved with a Return Authorization Number (RA#).

To obtain an RA#, please contact our Customer Service Department at:

Toll Free: 1-800-993-1841 / Fax: 1-972-241-1184 Email: orders@MaevnUniforms.com

RETURN OF MERCHANDISE

RA#'s must be requested within 30 days of receipt. Only items with an RA# may be returned.

Packages without an RA# will be refused.

DEFECTIVE MERCHANDISE

We stand behind our products. Defective merchandise will always be accepted as long as it is returned within 30 days of receipt. We will either replace those items at no cost or issue full credit.

SHIPPING DISCREPANCIES

Any items shipped in error must be reported within 7 business days.

We will make sure every item that is returned will be immediately replaced with correct items.

SHORTAGE CLAIMS

Shortage claims must be reported within 7 business days of receipt.

SALES TERMS & CONDITIONS

Credit Terms: All new accounts and customer orders are subject to review by Maevn Credit Department.

Merchandise must be paid in US Dollars. Finance charges on past due balances will be imposed.

MINIMUM ADVERTISED PRICE (MAP)

All accounts must adhere to Maevn's published Minimum Advertised Pricing (MAP).

Any discrepancy or violation could result in suspension or closure of the account.

CUSTOMER SERVICE

Durable & High Performance



TOP
EON: 5208-PEW
BLAZE: 3814-BLK

BOTTOM
EON: 8308-PEW



13950 Senlac Dr. Suite 300, Farmers Branch, TX 75234

P: 800-993-1841 | F: 972-241-1184 | orders@maevnuniforms.com



[maevnuniforms](https://www.instagram.com/maevnuniforms)



[MaevnUniforms](https://twitter.com/MaevnUniforms)



[MaevnUniforms](https://www.facebook.com/MaevnUniforms)



[maevnuniforms](https://www.pinterest.com/maevnuniforms)

[MaevnUniforms.com](https://www.MaevnUniforms.com)